



ABOUT

REGISTER

DISPATCH

HELP

SUPPORT



## Navigraph Charts

With a Navigraph Unlimited subscription you will get access to Jeppesen's worldwide IFR and VFR charts library in addition to the latest navigation data.

Navigraph Charts lets you view, search and organize departure, enroute and approach charts all in one place for a seamless experience. With features such as flight planning, intelligent procedure selection, interactive enroute charts, terrain and obstacle presentation, and real-time weather information, it offers the most realistic simulation for IFR and VFR flights.

LEARN MORE



DETAILED FLIGHT PLANNING



WHAT DOES IT ALL MEAN?



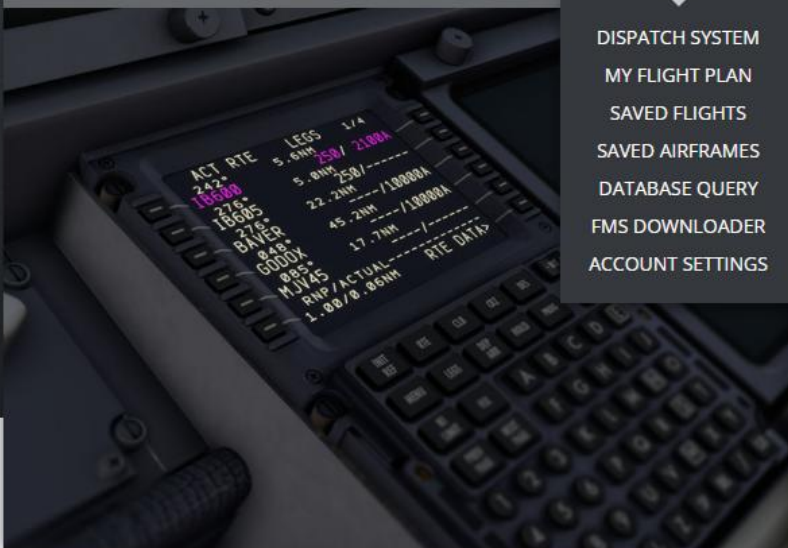
CURRENT AIRAC CYCLES



# SimBrief by Navigraph

LOGOUT [CEES WIERDA]

- HOME
- ABOUT
- REGISTER
- DISPATCH
- HELP
- SUPPORT



- DISPATCH SYSTEM
- MY FLIGHT PLAN
- SAVED FLIGHTS
- SAVED AIRFRAMES
- DATABASE QUERY
- FMS DOWNLOADER
- ACCOUNT SETTINGS

## SimBrief and Navigraph

To access SimBrief, users need to sign in using a [Navigraph](#) account. Creating a Navigraph account is free, quick and easy.

SimBrief is free to use, however, it uses a slightly outdated navigation database by default. You can purchase a Navigraph subscription after registering, which will give you access to the latest real-world navigation data encoded for flight simulator use, updated every 28 days.

[CREATE A NAVIGRAPH ACCOUNT](#)

\* You will be redirected back to SimBrief after registering.



### DETAILED FLIGHT PLANNING

The [SimBrief Dispatch System](#) is the web's most comprehensive FREE virtual flight planning service. Features include detailed fuel calculations for over 120 aircraft types, an extensive route database, real-world



### WHAT DOES IT ALL MEAN?

Visit the [User Guide](#) or view the [Tutorial Video](#) for a detailed look at how to use the SimBrief Dispatch System. The user guide also features an [Interactive OFP Sample](#) which makes it possible to hover over any one of a sample



### CURRENT AIRAC CYCLES

SimBrief is provided by [Navigraph](#), the flight simulation community's trusted source for updated charts and navigational data (such as airports, waypoints, and airways). Navigraph subscriptions always have access to the latest

14 Feb 2025 - Update 2025.15 is now live! This update includes various updates, view the full changelog [here](#).

### Latest Flight Plan

16 Feb 2025 - 15:10 UTC

**TRA52B**

LICR (Reggio Calabria) | **LOWI** (Innsbruck)

B737-800 (PH-HXK)

[View Flight Plan](#)  
[Edit Flight](#)



### Aircraft Types

In the past 30 days

2

- B738: 60%
- B77W: 40%

[View Saved Airframes](#)  
[Create New Airframe](#)

### Navigraph Subscription

Subscribed

**Navigraph Unlimited**  
Charts and Navigation Data

**AIRAC 2501**  
Current Cycle

[View Subscription Details](#)  
[View AIRAC Settings](#)

### Your Recent Flights

4 - Flight plans you have recently generated [Show More Flights](#)

Flight	Depart	Arrive	Aircraft	Airframe	Depart Time	Time Enroute	Release Number	Date Generated	View	PDF	Edit
TRA52B	LICR / REG	LOWI / INN	B738	PH-HXK	16 Feb - 15:40 UTC	1:54	1	16 Feb 25 - 15:10 UTC	<a href="#">View</a>	<a href="#">PDF</a>	<a href="#">Edit</a>
TRA52T	LOWI / INN	LICR / REG	B738	PH-HXK	14 Feb - 09:15 UTC	1:38	2	14 Feb 25 - 08:45 UTC	<a href="#">View</a>	<a href="#">PDF</a>	<a href="#">Edit</a>
TRA52T	LOWI / INN	LICR / REG	B738	PH-HXK	14 Feb - 09:15 UTC	1:38	1	14 Feb 25 - 08:44 UTC	<a href="#">View</a>	<a href="#">PDF</a>	<a href="#">Edit</a>
TRA52B	EHAM / AMS	EGLL / LHR	B738	PH-HXK	13 Feb - 15:40 UTC	0:50	1	13 Feb 25 - 15:08 UTC	<a href="#">View</a>	<a href="#">PDF</a>	<a href="#">Edit</a>

Generate Flight | Calculate & Compare | Briefing Preview | Save Flight | Share Flight | New Flight | Close Flight

### Flight Info

Airline (ICAO): ZZZ | Flight Number: 0000 | Depart: ZZZZ | Arrive: ZZZZ | Alternate: AUTO | Departure Time (EOST): 17 Feb 2025 - 09:45

### Aircraft Info

Aircraft Type: None | Variant or Airframe: 32 Airframes Available | Open Airframe Editor

Climb Profile: AUTO | Cruise Profile: AUTO | Descent Profile: AUTO | Fuel Factor: P00 | ATC Callsign: ZZZ0000

Registration: N999SB | Fin Number: 999 | SELCAL: ABCD

### Selections

Current AIRAC | Save Defaults

OPF Layout: LIDO | AIRAC Cycle: AIRAC 2501 - 23Jan25 to 19Feb25

Units: Kilograms | Flight Maps: Detailed | Taxi Out / In (Minutes): 20 / 8

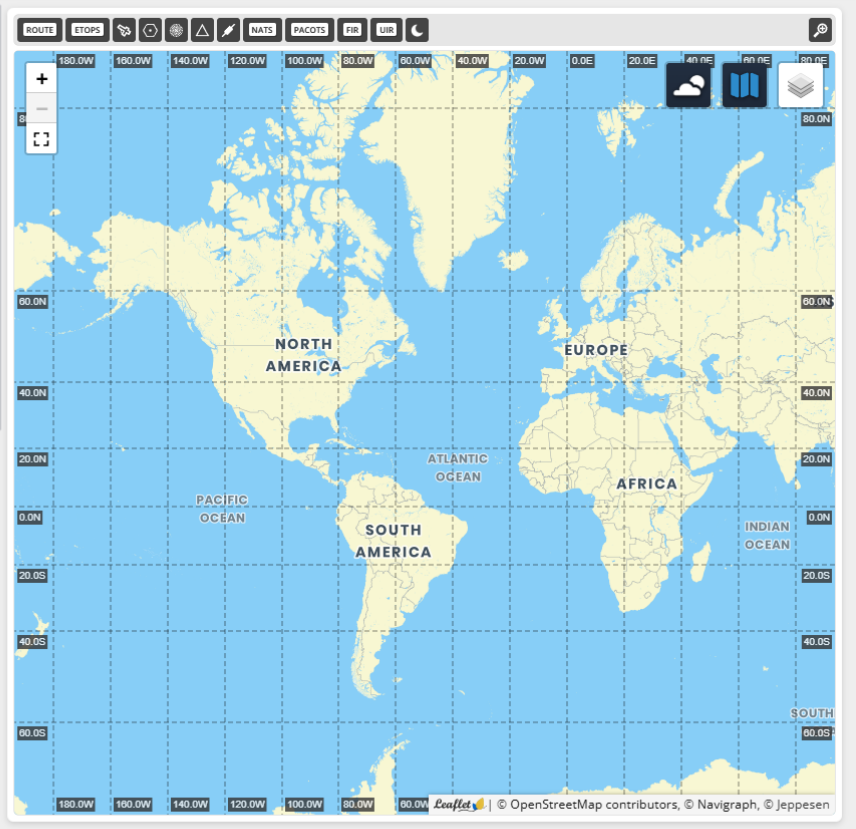
Flight Rules: IFR | Type of Flight: Scheduled | Alternates Count: 1

Detailed Navlog:  | ETOPS Planning:  | Plan Stepclimbs:  | Runway Analysis:  | Include NOTAMs:  | FIR NOTAMs:

### Optional Entries

Scheduled Block Time: 0 : 00 | Departure Runway: AUTO | Arrival Runway: AUTO | Altitude (Feet): AUTO | Passengers: AUTO

Freight (KG): ? | Payload (KG): ? | Zero Fuel Weight (KG): ?



- 🏠 Dashboard
- ✈️ New Flight
- ⚙️ Edit Flight
- 🔍 View Flight Plan
- 📅 Saved Flights
- ✈️ Saved Airframes
- 🌤️ Weather & NOTAM
- 🛠️ Performance & Tools
- 🔍 User Guide
- 👤 Account Settings

📌 New Airframe    🗑️ Delete Selected Airframes

**Saved Airframes** (33) - A list of airframes you have saved

🔍 Search for an airframe

Registration	Fin	ICAO Code	Aircraft Name	Engine Type	Passengers	Comments	Last Modified	Plan	Edit	Delete	Select All
D8-FBW	—	A388	A380-842	Trent 972B-84	484	FLYBYWIRE A380X	04 Nov 24 - 12:45 UTC	Plan	Edit	Delete	☑️
EI-IJV	806	B738	B737-800	CFM56-7B26	184	RYANAIR	08 Nov 24 - 08:32 UTC	Plan	Edit	Delete	☑️
G-NPTD	—	B738	B737-800BCF	CFM56-7B26	0	PMDG BCF	20 Feb 25 - 10:16 UTC	Plan	Edit	Delete	☑️
LN-NGM	806	B738	B737-800	CFM56-7B26	184	NORWEGIAN	30 Sep 22 - 17:21 UTC	Plan	Edit	Delete	☑️
LN-RGA	806	B738	B737-800	CFM56-7B26	184	SAS	16 Oct 22 - 14:18 UTC	Plan	Edit	Delete	☑️
N063SB	063	DHC6	Twin Otter	—	16	—	21 Oct 23 - 15:23 UTC	Plan	Edit	Delete	☑️
N616SB	616	B736	B737-600	CFM56-7B22	149	—	31 Jul 22 - 09:17 UTC	Plan	Edit	Delete	☑️
N714SB	714	B737	B737-700	CFM56-7B24	149	LUXAIR	23 Sep 22 - 17:42 UTC	Plan	Edit	Delete	☑️
N714SB	714	B737	B737-700	CFM56-7B24	149	SAS	17 Sep 22 - 14:01 UTC	Plan	Edit	Delete	☑️
N714SB	714	B737	B737-700	CFM56-7B24	149	KLM	19 May 22 - 13:28 UTC	Plan	Edit	Delete	☑️
N737KT	806	B738	B737-800	CFM56-7B26	4	DHL	09 Nov 24 - 17:30 UTC	Plan	Edit	Delete	☑️
N806SB	806	B738	B737-800	CFM56-7B26	184	KLM	15 Jan 22 - 17:43 UTC	Plan	Edit	Delete	☑️
N806SB	806	B738	B737-800	CFM56-7B26	184	KLM	15 Jan 22 - 17:36 UTC	Plan	Edit	Delete	☑️
N8520Q	806	SWA	B737-800	CFM56-7B26	184	SOUTHWESTSWA	26 Sep 22 - 12:22 UTC	Plan	Edit	Delete	☑️
N922SB	922	B739	B737-900	CFM56-7B26	189	KLM	15 Jan 22 - 14:46 UTC	Plan	Edit	Delete	☑️
OE-LNL	—	B736	B737-600	CFM56-7B22	130	PMDG ECONOMY 130	28 Dec 24 - 10:30 UTC	Plan	Edit	Delete	☑️
PH-AVA	205	A320	FENIX A320 CFM	CFM56-5B4/P	180	KLM	25 Mar 24 - 12:40 UTC	Plan	Edit	Delete	☑️
PH-BCA	806	B738	B737-800	CFM56-7B26	184	KLM	28 Sep 22 - 10:36 UTC	Plan	Edit	Delete	☑️
PH-BGG	714	B737	B737-700	CFM56-7B24	149	KLM	23 Sep 24 - 08:06 UTC	Plan	Edit	Delete	☑️
PH-BGG	714	B737	B737-700	CFM56-7B24	149	KLM	15 Mar 23 - 09:05 UTC	Plan	Edit	Delete	☑️
PH-BRA	—	B78X	B787-10	TRENT 1000-R	344	Asobo/Working Title 787-10	18 Nov 23 - 09:44 UTC	Plan	Edit	Delete	☑️
PH-BVD	713	B77W	B777-300ER	GE90-115BL2	386	KLM Skyteam	30 Jul 24 - 11:06 UTC	Plan	Edit	Delete	☑️
PH-BVF	—	B77W	B777-300ER	GE90-115BL	370	PMDG (MSFS)	02 Jul 24 - 12:40 UTC	Plan	Edit	Delete	☑️

- Dashboard
- New Flight
- Edit Flight
- View Flight Plan
- Saved Flights
- Saved Airframes**
- Weather & NOTAM
- Performance & Tools
- User Guide
- Account Settings

← Cancel New Airframe

Select Aircraft Type 150 - Choose which aircraft to base your new airframe on

🔍 Search for an aircraft

Type Code	Aircraft Name	Engine Type	Passengers	Max Takeoff Weight	Cruise Speed	Service Ceiling	Chart Data	Cost Index	Last Updated	Select
A225	Antonov AN-225	D-18T	38	1,410,957 lbs (639,999 kg)	Mach 0.74	36,000 ft	Yes	—	23 Oct 24 - 20:21 UTC	Select
A306	A300B4-600	CF6-80C2A1	274	363,763 lbs (165,000 kg)	Mach 0.78	40,000 ft	Yes	Yes	14 Jul 24 - 15:12 UTC	Select
A35T	A300F4-608ST	CF6-80C2A8	5	337,307 lbs (153,000 kg)	Mach 0.68	35,000 ft	Yes	—	15 Feb 21 - 22:00 UTC	Select
A30B	A300B4-200	CF6-50C2	269	363,763 lbs (165,000 kg)	Mach 0.78	40,000 ft	Yes	Yes	08 Sep 20 - 23:00 UTC	Select
A30F	A300F4-600R	CF6-80C2A5	25	375,888 lbs (170,500 kg)	Mach 0.78	40,000 ft	Yes	Yes	14 Jul 24 - 15:12 UTC	Select
A310	A310-304	CF6-80C2A2	240	346,185 lbs (157,027 kg)	Mach 0.80	41,000 ft	Yes	Yes	14 Jul 24 - 15:12 UTC	Select
A318	A318-100	CFM56-5B9/P	136	149,914 lbs (68,000 kg)	Mach 0.78	39,000 ft	Yes	Yes	14 Jul 24 - 15:08 UTC	Select
A319	A319-100	CFM56-5B6/2P	145	168,653 lbs (76,500 kg)	Mach 0.78	39,000 ft	Yes	Yes	10 Jul 24 - 23:40 UTC	Select
A320	A320-200	CFM56-5B4/P	180	171,961 lbs (78,000 kg)	Mach 0.78	39,000 ft	Yes	Yes	14 Jul 24 - 15:09 UTC	Select
A20N	A320-251N	LEAP-1A26	186	174,165 lbs (79,000 kg)	Mach 0.78	39,100 ft	Yes	Yes	14 Jul 24 - 15:09 UTC	Select
A321	A321-200	CFM56-5B3/P	220	206,132 lbs (93,500 kg)	Mach 0.78	39,000 ft	Yes	Yes	14 Jul 24 - 15:09 UTC	Select
A21N	A321-251N	LEAP-1A32	220	206,132 lbs (93,500 kg)	Mach 0.78	39,100 ft	Yes	Yes	14 Jul 24 - 15:09 UTC	Select
A332	A330-200	CF6-80E1A4	293	513,676 lbs (233,000 kg)	Mach 0.80	41,000 ft	Yes	Yes	14 Jul 24 - 15:22 UTC	Select
A333	A330-300	TRENT 772	335	513,676 lbs (233,000 kg)	Mach 0.80	41,000 ft	Yes	Yes	14 Jul 24 - 15:22 UTC	Select
A338	A330-800	TRENT 7000-72	293	533,519 lbs (242,000 kg)	Mach 0.80	41,400 ft	Yes	Yes	12 Feb 25 - 17:57 UTC	Select
A339	A330-900	TRENT 7000-72	335	533,519 lbs (242,000 kg)	Mach 0.80	41,400 ft	Yes	Yes	12 Feb 25 - 17:57 UTC	Select
A342	A340-200	CFM56-5C2	261	573,201 lbs (260,000 kg)	Mach 0.80	41,100 ft	Yes	Yes	23 Oct 24 - 20:17 UTC	Select
A343	A340-300	CFM56-5C4	277	597,452 lbs (271,000 kg)	Mach 0.80	41,100 ft	Yes	Yes	23 Oct 24 - 20:18 UTC	Select
A345	A340-500	TRENT 556-61	375	837,756 lbs (380,000 kg)	Mach 0.83	41,000 ft	Yes	Yes	23 Oct 24 - 20:21 UTC	Select
A346	A340-600	TRENT 556-61	440	837,756 lbs (380,000 kg)	Mach 0.83	41,000 ft	Yes	Yes	23 Oct 24 - 20:20 UTC	Select
A359	A350-900	TRENT XWB-84	315	590,839 lbs (268,000 kg)	Mach 0.85	43,100 ft	Yes	Yes	24 Feb 21 - 23:30 UTC	Select
A35K	A350-1000	TRENT XWB-97	369	679,024 lbs (308,000 kg)	Mach 0.85	41,400 ft	Yes	Yes	16 Apr 21 - 06:37 UTC	Select
A388	A380-800	TRENT 970-84	471	1,267,657 lbs (575,000 kg)	Mach 0.85	43,000 ft	Yes	Yes	23 Oct 24 - 20:18 UTC	Select

24 Feb 2025 - 11:23:53 UTC

- Dashboard
  - New Flight
  - Edit Flight
  - View Flight Plan
  - Saved Flights
  - Saved Airframes**
  - Weather & NOTAM
  - Performance & Tools
  - User Guide
  - Account Settings
- 24 Feb 2025 - 11:25:29 UTC
- Terms of Service - Privacy Policy  
© Navigraph 2025, Version 2.32.0 (651)  
Not for real world navigation

Save Airframe Share Airframe Copy Airframe Close Airframe Undo Changes Delete Airframe

This airframe was last saved on: 24 Feb 25 - 11:25 UTC

### Airframe Info

Internal ID: 529713\_1642258030385

Base Type	ICAO Code	Civil Registration	Fin Number	SELCAL Code	ICAO Mode-S Code
B738	B738	PH-HXX	806	NONE	ZZZZZZ
OPF Layout	Flight Rules	Type of Flight	Plan Units	Max Diversion (NM)	Min Runway (FT)
Default	Default	Default	Default	417	7000
Aircraft Name	Engine Type	Comments			
B737-800	CFM56-7B26	TRANSAVIA			

### Airframe Weights

All weights in KG

Weight Units	Max Passengers	Passenger Weight (KG)	Baggage Weight (KG)
Kilograms	184	79	25
Empty Weight (KG)	Max Zero Fuel Weight (KG)	Max Takeoff Weight (KG)	Max Landing Weight (KG)
41682	62732	79016	66361
Max Fuel Capacity (KG)	Max Cargo Weight (KG)	Default Freight Mode	
20911	None	Default (None)	

### Airframe Equipment

Performance Code	Weight Category	ETOPS Threshold	ETOPS Certification
D (Vref 141-165 kts)	M (Medium)	60 minutes	Auto
ICAO Equipment	ICAO Transponder	PBN Capability	
SDEZE3FGHIRWXY	LB1	A1B1C1D1S1S2	
Extra FPL Info (Item 18) DAT/V RMK/SIMBRIEF			

### Airframe Fuel Planning

Contingency Fuel	Reserve Fuel	Taxi Fuel (KG)	Block Fuel (KG)
Default	Default	AUTO	AUTO KG
Arrival Fuel (KG)	MEL Fuel (KG)	ATC Fuel (KG)	WXX Fuel (KG)
AUTO KG	0 KG	0 KG	0 KG
EXTRA (KG)	Tankering (KG)		
0 KG	0 KG		

### Airframe Text Entries

Dispatcher Remarks

CUSTOM DISPATCH REMARKS,  
SEPARATE EACH REMARK WITH A NEW LINE

### Airframe Performance

Fuel Factor	Cruise Level Offset	Service Ceiling (Feet)	Default Cruise Profile
P00	P0000	41000	Cl Auto
Default Climb Profile	Default Descent Profile	Takeoff Thrust (LBF)	Takeoff Thrust Flat Rating
250/280/78	78/280/250	26300	Default (30°C)



# Aircraft Info

Open Airframe Editor

Aircraft Type

None

Variant or Airframe

Sort by Registration

32 Airframes Available

- 32 Airframes Available
- - D8-FBW - A380-842 (FLYBYWIRE A380X)
  - EI-IJV - B737-800 (RYANAIR)
  - LN-NGM - B737-800 (NORWEGIAN)
  - LN-RGA - B737-800 (SAS)
  - N063SB - Twin Otter
  - N616SB - B737-600
  - N714SB - B737-700 (KLM)
  - N714SB - B737-700 (LUXAIR)
  - N714SB - B737-700 (SAS)
  - N737KT - B737-800 (DHL)
  - N806SB - B737-800 (KLM)
  - N806SB - B737-800 (KLM)
  - N8520Q - B737-800 (SOUTHWESTSWA)
  - N922SB - B737-900 (KLM)
  - OE-LNL - B737-600 (PMDG ECONOMY 130)
  - PH-AVA - FENIX A320 CFM (KLM)
  - PH-BCA - B737-800 (KLM)
  - PH-BGG - B737-700 (KLM)

Climb Profile

AUTO

Cruise Profile

AUTO

Registration

N999SB

Fin Number

999

## Selections

OFF Layout

LIDO

AIRAC 2501

Units

Kilograms

Flight Maps

Detailed

Flight Rules

IFR

Type of Flight

Scheduled

## Optional Entries - Automatically calculated, but c

Scheduled Block Time

0 : 00

Departure Runway

AUTO

Arrival Runway

AUTO

Altitude Feet

AUTO

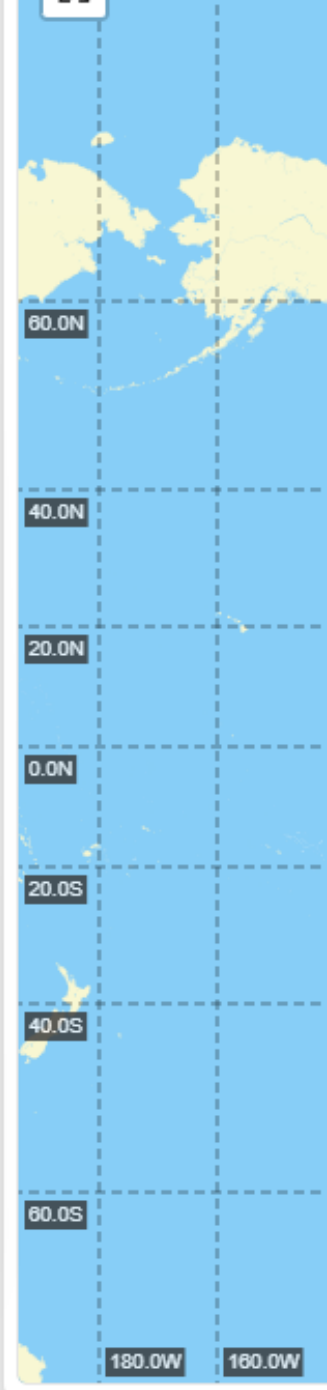
Passengers

AUTO

Freight KG

Payload KG

Zero Fuel Weight KG



## Route



EDI-GLA



### Selected Route

BREN2J BRENO VESAL CHI IVMEP SUXUB PIGER

Analyze Route →

Your route is valid for AIRAC 2501!  
Route distance: 603 nm (+ 3.5%).

## Suggested Routes

BREN2J BRENO V  
PIGER

BREN2J BRENO C  
M736 SOR Q58 F

ELMEM N606 OTF  
CHI ERLIT ERI

BREN2J BRENO C  
M736 SOR Q58 F

- [AGP / LEMG Airport Flight Tracker](#)
- [AGP / LEMG Airport Photos](#)
- [AGP / LEMG Weather](#)
- [Buy AGP / LEMG Excel Flight History](#)

For IFR flight planning, be certain to note altitude, type of aircraft and verify on terminal procedures that you are eligible for that SID/STAR/routing. Hover your mouse over an aircraft type or suffix for more details.

IFR Route Analyzer

Origin Airport

EHAM Nearby: EDLV

Destination Airport

LEMG

Find route!

Reverse route



This data is for suggestion purposes only. Flights may not have been conducted as filed, aircraft type may be erroneous, or data may contain other errors. You must independently verify validity of data by evaluating traditional flight planning publications to be guaranteed of terrain separation, range (fuel capacity) for your aircraft, potential ADS-B coverage, and other issues that could be fatally hazardous to the health of you and/or your passengers.

Route Analysis Summary

Frequency	Origin	Destination	Altitude	Full Route
-----------	--------	-------------	----------	------------

Start het Downloaden

Download de nieuwste Microsoft stuurprogramma's voor uw computer. Update nu. WinZip Driver Updater

Downloaden

Route Analysis Itemized List

Filed Time	Ident	Origin	Destination	Aircraft	Altitude	Route
------------	-------	--------	-------------	----------	----------	-------

Note: If results are insufficient, try nearby airports.



FlightAware provides accurate real-time, historical and predictive flight insights to all segments of the aviation industry.



Products & Services

- AeroAPI
- FlightAware Firehose
- FlightAware Foresight
- Rapid Reports
- Custom Reports
- FlightAware Aviator
- Premium Subscriptions
- FlightAware Global
- FlightAware FBO Toolbox
- FlightAware TV™
- GlobalBeacon

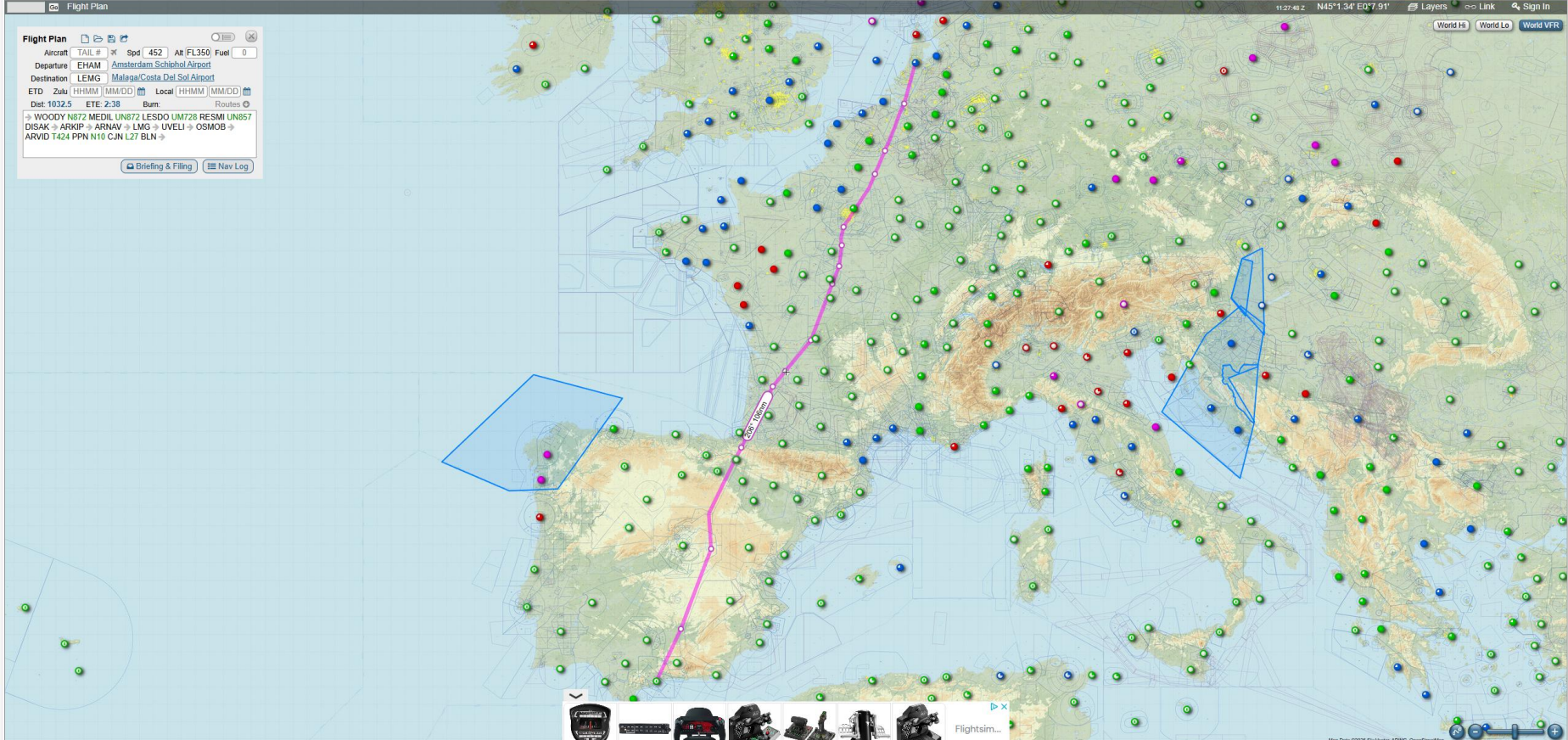
Company

- About
- Careers
- History
- Advertise With Us
- Newsroom
- Blog
- Webinars
- GSA Contract # 47QTCA21D003F

Community

- Photos
- Squawks
- Discussions
- Host an ADS-B Site
- Support
- Contact Us
- FAQs

**BET CITY** CLAIM JE BONUS, JOIN BETCITY  
Wat kost gokken jou? Stop op tijd. 18+  
CSGO FREE BETS



**Flight Plan**

Aircraft: TAIL # Spd 452 Alt FL350 Fuel 0

Departure: EHAM Amsterdam Schiphol Airport

Destination: LEMG Malaga/Costa Del Sol Airport

ETD Zulu HHMM MM/DD Local HHMM MM/DD

Dist: 1032.5 ETE: 2:38 Burn: Routes

→ WOODY N872 MEDIL UN872 LESDO LIM728 RESMI UN857  
DISAK → ARKIP → ARNAV → LMG → UVELI → OSMOB →  
ARVID T424 PPN N10 CJN LZ7 BLN →

Briefing & Filing Nav Log

- Dashboard
  - New Flight
  - Edit Flight
  - View Flight Plan
  - Saved Flights
  - Saved Airframes
  - Weather & NOTAM
  - Performance & Tools
  - User Guide
  - Account Settings
- 17 Feb 2025 - 09:26:06 UTC
- Terms of Service - Privacy Policy  
© Navigraph 2025. Version 2.30.1 (628)  
Not for real world navigation

[Generate Flight](#)
[Calculate & Compare](#)
[Briefing Preview](#)
[Save Flight](#)
[Share Flight](#)
[New Flight](#)
[Close Flight](#)

Scheduled block time: 2 : 05  
 Departure runway: 08  
 Arrival runway: 33  
 Altitude (feet): AUTO  
 Passengers: AUTO

Freight (KG): NONE  
 Payload (KG): AUTO  
 Zero Fuel Weight (KG): AUTO

**Fuel Planning** - Custom fuel policies and extra fuel options [Show Options](#)

**Text Entries** - Names and remarks [Show Options](#)

**Route** [FlightAware](#) [SkyVector](#) [AirNav](#) [AGRD](#) [EDI-GLA](#) [autorouter](#)

Selected Route

BREN2J BRENO VESAL CHI IVMEP SUXUB PIGER

[Analyze Route](#) → Your route is valid for AIRAC 2501!  
 Route distance: 603 nm (+ 3.5%).  
[Find SID/STAR](#)

**Suggested Routes** - Click to use [View All](#)

- BREN2J BRENO VESAL CHI IVMEP SUXUB PIGER
- BREN2J BRENO OZE VIC FOL PRU TEA M736 SOR Q58 FOSQA FOSQ1E
- ELMEM N606 OTRES T307 DIRAB LAMPO CHI ERLIT ERIKA AGNIS SOBRI VULKA
- BREN2J BRENO OZE VIC FOL PRU TEA M736 SOR Q58 FOSQA FOSQ1R
- BREN2J BRENO VESAL CHI IVMEP SUXUB TEA SOR Q58 FOSQA FOSQ1E

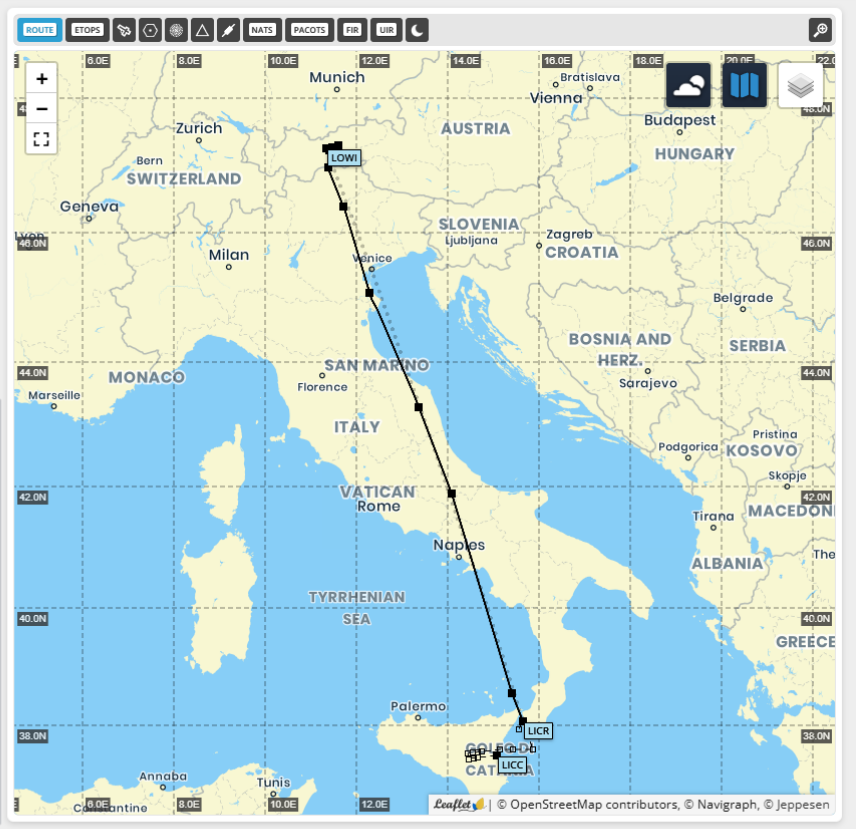
**Route Finder** - Generate a custom route [Show Options](#)

**Alternate Airports** - Custom alternates and routings [Show Options](#)

**ETOPS Scenario** - Custom ETOPS airports and options [Show Options](#)

**Historical Weather** - Requires Active Sky AS16, ASP4, or ASPX Disabled [Show Options](#)

**Debug Parameters** [Show Options](#)



This briefing was generated on: 17 Feb 2025 at 09:27 UTC.

### Flight Info

Flight Number <b>TRA52B</b>	Callsign <b>TRA52B</b>	Departure <b>LOWI / INN</b>	Arrival <b>LICR / REG</b>	Alternate <b>LICC / CTA</b>	Aircraft <b>B737-800</b>
Departure Date <b>17 Feb 25</b>	Departure Time <b>09:45 UTC</b>	Arrival Time <b>11:50 UTC</b>	Air Time <b>01:37</b>	Block Time <b>02:05</b>	Airframe <b>PH-HXK</b>

### Flight Plan Summary

Initial Altitude <b>35,000 ft</b>	Cruise Profile <b>CI 31</b>	Route Distance <b>628 nm</b>	Average Wind <b>303 / 39</b>	Wind Component <b>P029</b>	ISA Deviation <b>M05</b>
Release Number <b>1</b>	AIRAC Cycle <b>2501</b>	OPF Layout <b>LIDO</b>	Units <b>KG</b>	Navlog <b>Yes</b>	ETOPS <b>No</b>

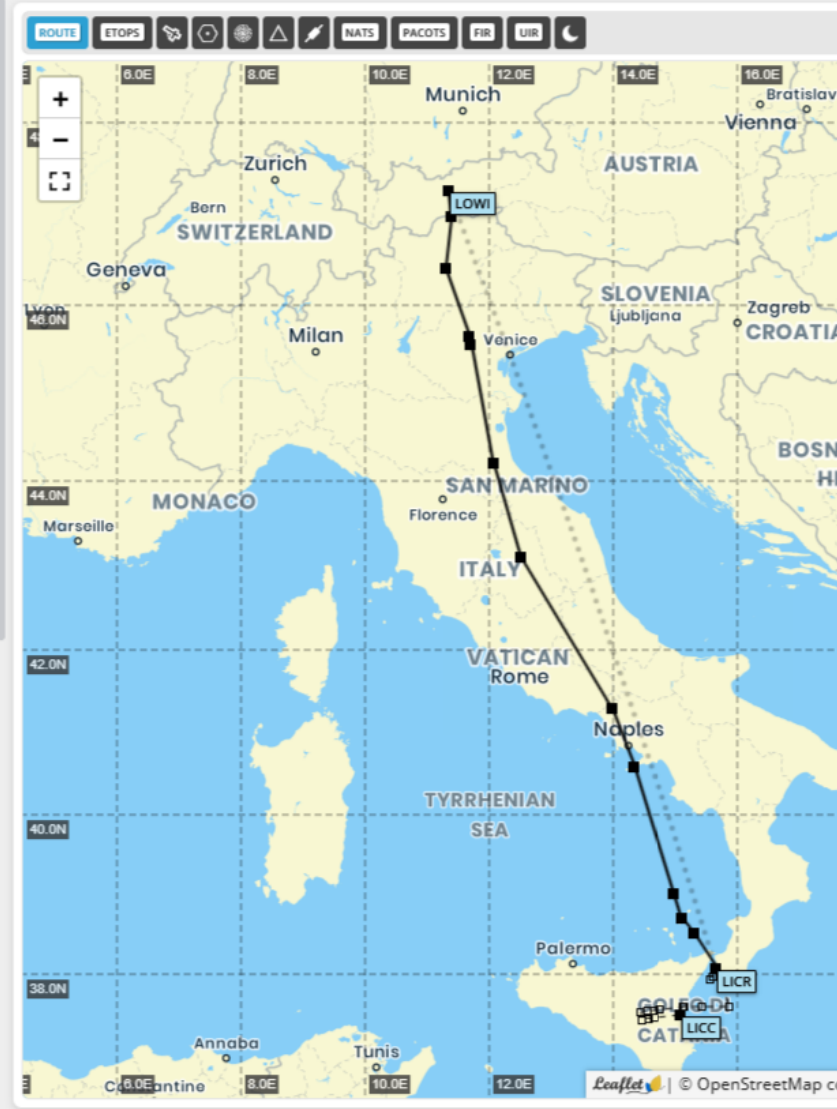
### Load Sheet - All weights in (KG)

Enroute Burn <b>4,075 kg</b>	Passenger Count <b>166</b>	Empty Weight <b>41,682 kg</b>	Estimated ZFW <b>58,946 kg</b>	Estimated TOW <b>66,328 kg</b>	Estimated LW <b>62,253 kg</b>
Block Fuel <b>7,609 kg</b>	Cargo <b>4,150 kg</b>	Payload <b>17,264 kg</b>	Max ZFW <b>62,732 kg</b>	Max TOW <b>79,016 kg</b>	Max LW <b>66,361 kg</b>

### Route

LOWI/08 N0443F350 DCT BRENO DCT OZE DCT VIC DCT FOL DCT PRU DCT TEA/N0371F190 M736 SOR Q58 FOSQA DCT LICR/33

### Dispatch Remarks



**SimBrief** AIRAC 2501 Cees Wierda

- Dashboard
- New Flight
- Edit Flight
- View Flight Plan
- Saved Flights
- Saved Airframes
- Weather & NOTAM
- Performance & Tools
- User Guide
- Account Settings

17 Feb 2025 - 09:28:08 UTC

Terms of Service - Privacy Policy  
© Navigraph 2025. Version 2.30.1 (628)  
Not for real world navigation

**Generate Flight** Calculate & Compare Briefing Preview Save Flight Share Flight New Flight Close Flight

LIDO AIRAC 2501 - 23Jan25 to 19Feb25

Units: Kilograms Flight Maps: Detailed Taxi Out / In: 20 / 8

Flight Rules: IFR Type of Flight: Scheduled Alternates Count: 1

ETOPS Planning:  Plan Stepclimbs:  Runway Analysis:  Include NOTAMs:  FIR NOTAMs:

**Optional Entries** - Automatically calculated, but can be customized Hide Options

Scheduled Block Time: 2 : 05 Departure Runway: 08 Arrival Runway: 33 Altitude: AUTO Passengers: AUTO

Freight: NONE Payload: AUTO Zero Fuel Weight: AUTO

**Fuel Planning** - Custom fuel policies and extra fuel options Show Options

**Text Entries** - Names and remarks Show Options

**Route** FlightAware Skymeter A-Navtools ARD EDI-GLA autorouter

Selected Route

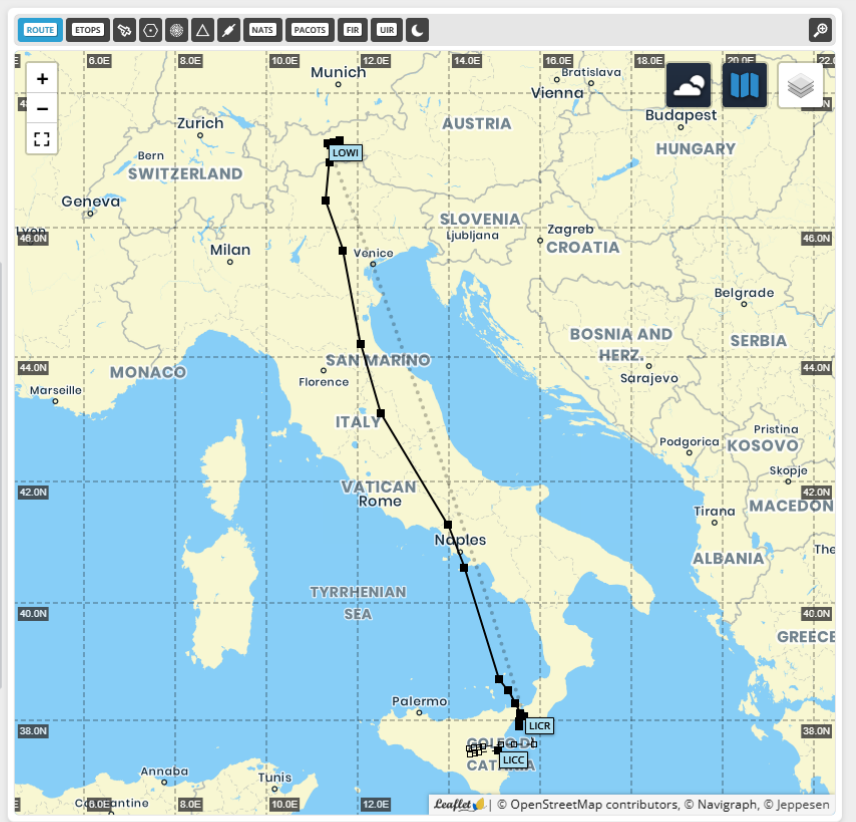
BRENZJ BRENO OZE VIC FOL PRU TEA M736 SOR Q58 FOSQA FOSQ1E

Analyze Route → Your route is valid for AIRAC 2501!  
Route distance: 633 nm (+ 8.6%).

Find SID/STAR ↻

**Suggested Routes** - Click to use View All

- BRENZJ BRENO VESAL CHI IWIPEP SUXUB PIGER VALID
- BRENZJ BRENO OZE VIC FOL PRU TEA M736 SOR Q58 FOSQA FOSQ1E VALID
- ELMEM N606 OTRES T307 DIRAB LAMPO CHI ERLIT ERIKA AGNIS SOBRI VULKA VALID
- BRENZJ BRENO VESAL CHI IWIPEP SUXUB TEA SOR Q58 FOSQA FOSQ1R VALID
- BRENZJ BRENO LIPC LIRI FOSQA FOSQ1E VALID



# Takeoff Performance



Aircraft Type	Variant or Airframe	Sort by Registration		
B738 - B737-800	PH-HXK - TRANSAVIA			
Airport	Runway	TORA Length	Lengths	Weights
LOWI	08	6562	Feet	Kilograms
Takeoff Weight	Flap Setting	Thrust Setting	Bleed Setting	Anti-ice Setting
66379	Optimum	Optimum	Auto	Auto
Wind	Temperature	Pressure	Surface Condition	Populate Weather
090/04	-1	30.12	Dry	
Flex/Assumed Temperature	Improved Climb Calculations	Calculate		
Enabled	Enabled			

## Calculation Output



Ready to calculate

Copy

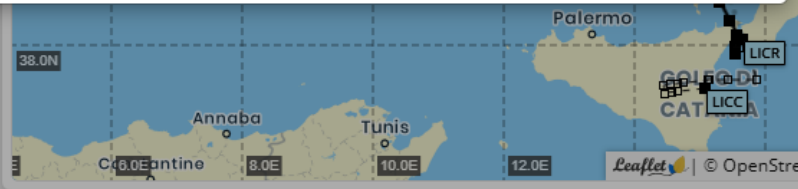
Close

LOWI/08 N0448F370 BREN2J BRENO DCT OZE DCT VIC DCT FOL DCT PRU DCT TEA/N0371F190 M736 SOR Q58 FOSQA FOSQ1E LICR/33

Copy

Dispatch Remarks

Hide Details



Leaflet | © OpenStreetMap contributors



Aircraft Type: **B738 - B737-800** Variant or Airframe: **PH-HXK - TRANSAVIA** Sort by Registration

Airport: **LOWI** Runway: **08** (6,562 ft) TORA Length: **6562** Lengths: **Feet** Weights: **Kilograms**

Takeoff Weight: **66379** (KG) Flap Setting: **Optimum** Thrust Setting: **Optimum** Bleed Setting: **Auto** Anti-ice Setting: **Auto**

Wind: **090/04** (True) Temperature: **-1** (°C) Pressure: **30.12** (inHG) Surface Condition: **Dry** Populate Weather

Flex/Assumed Temperature: **Enabled** Improved Climb Calculations: **Enabled** Calculate

**Calculation Output** Information

TAKEOFF PERFORMANCE  
PH-HXK B737-800 CFM56-7B26

RUNWAY AND WEATHER:

APT	LOWI/INN	WIND	090/04
RWY	08/+0	HW/XW	4/ 1
TORA	6562	OAT	-1
HDG	65	QNH	30.12
ELEV	1907	RWY COND	DRY

INPUTS:

WEIGHT	66.4	FLAPS	AUTO
THRUST	AUTO	BLEEDS	AUTO
FLEX/ATM	AUTO	A/ICE	AUTO

OUTPUTS:

FLAPS	5	V1	139
THRUST	D-T0	VR	140
SEL TEMP	29	V2	148
RWY LIM	71.7	BLEEDS	ON
LIM CODE	FIELD	A/ICE	OFF
STOP MARGIN	55	VREF40	143

MESSAGES:  
NONE Copy

Close

08 N0448F370 BREN2J BREN0 DCT OZE DCT VIC DCT FOL DCT PRU DCT TEA/N0371F190 M736 SOR  
OSQA FOSQ1E LICR/33 Copy

Remarks Hide Details



## Landing Performance

Aircraft Type: **B738 - B737-800**
 Variant or Airframe: **PH-HXK - TRANSAVIA**

Airport: **LICR**
 Runway: **33**
 LDA Length: **6378**
 Lengths: **Feet**
 Weights: **Kilograms**

Landing Weight: **62260**
 Flap Setting: **30**
 Brake Setting: **Optimum**
 Reverser Credit: **Yes**
 V<sub>REF</sub> Additive: **5**

Wind: **350/07**
 Temperature: **16**
 Pressure: **29.97**
 Surface Condition: **Dry**
[Populate Weather](#)

Calculation Method: **Inflight Method**
 Calculation Reference: **Factored Distance**
[Calculate](#)

**Calculation Output** [Information](#)

**LANDING PERFORMANCE**  
 PH-HXK B737-800 CFM56-7B26

**RUNWAY AND WEATHER:**  
 APT LICR/REG WIND 350/07  
 RWY 33/+0 HW/XW 6/ 3  
 LENGTH 6752 OAT 16  
 LDA 6378 QNH 29.97  
 ELEV 95 RWY COND DRY

**INPUTS:**  
 WEIGHT 62.3 FLAPS 30  
 VREF ADD 5 BRAKES AUTO  
 METHOD INFLIGHT REVERSE YES

**OUTPUTS:**  
 ACTUAL LANDING DISTANCE 4112 FT  
 FACTORED LANDING DISTANCE 5613 FT  
 FACTORED DISTANCE MARGIN 765 FT

RWY LIM 66.4 FLAPS 30  
 VAPP 150 BRAKES MAX AUTO

**MESSAGES:**  
 NONE

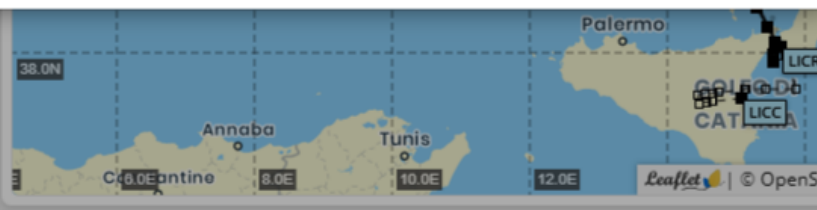
[Copy](#)

[Close](#)

WI/08 N0448F370 BREN2J BRENO DCT OZE DCT VIC DCT FOL DCT PRU DCT TEA/N0371F190 M736 SOR  
 B FOSQA F05Q1E LICR/33

[Copy](#)

[Match Remarks](#)
[Hide Details](#)





[ OFP ]

-----  
 TRA052B 17FEB2025 LOWI-LICR B738 PHHXK RELEASE 0928 17FEB25  
 OFP 2 INNSBRUCK-REGGIO CALABRIA  
 WX PROG 1709 1712 1715 OBS 1700 1700 1700

ATC C/S TRA52B LOWI/INN LICR/REG CRZ SYS CI 31  
 17FEB2025 PHHXK 0945/1005 1142/1150 GND DIST 641  
 B737-800 / CFM56-7B26 STA 1150 AIR DIST 597  
 CTOT:..... C/C DIST 583  
 AVG WIND 304/035  
 MAXIMUM TOW 79016 LAW 66361 ZFW 62732 AVG W/C PO27  
 ESTIMATED TOW 66379 LAW 62260 ZFW 58946 AVG ISA M003  
 AVG FF KGS/HR 2545  
 FUEL BIAS POO.0  
 TKOF ALTN .....

ALTN LICC  
 FL STEPS LOWI/0370/TEA/0190

DISP RMKS NIL

-----  
PLANNED FUEL

FUEL	ARPT	FUEL	TIME
TRIP	REG	4119	0137
CONT 15 MIN		636	0015
ALTN	CTA	1617	0039
FINRES		1061	0030
MINIMUM T/OFF FUEL		7433	0302
EXTRA		0	0000
T/OFF FUEL		7433	0302
TAXI	INN	227	0020
BLOCK FUEL		INN	7660
PIC EXTRA		.....	
TOTAL FUEL		.....	
REASON FOR PIC EXTRA		.....	

-----  
 FMC INFO:  
 FINRES+ALTN 2678  
 TRIP+TAXI 4346

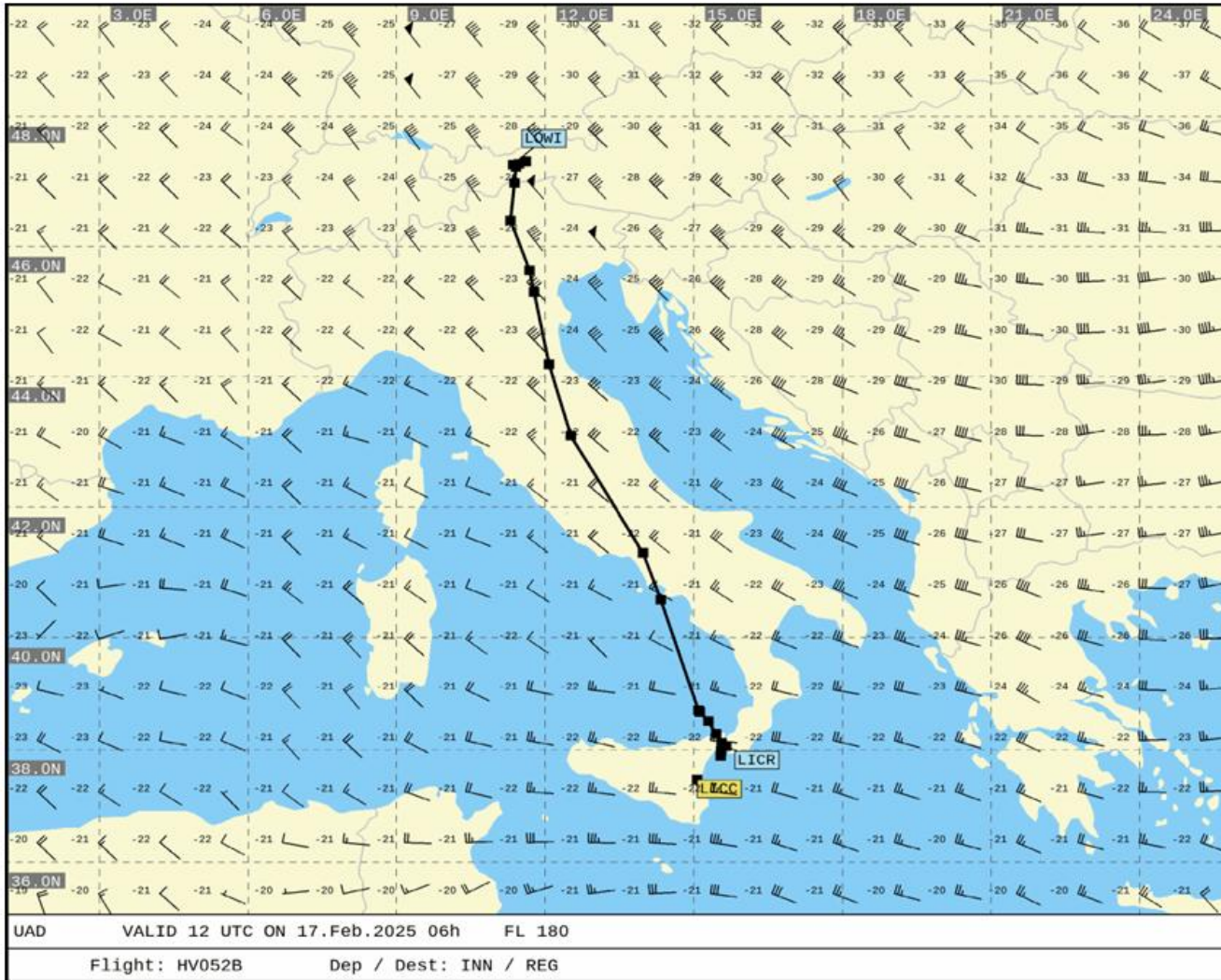
NO TANKERING RECOMMENDED (P)

-----  
 I HEREWITH CONFIRM THAT I HAVE PERFORMED A THOROUGH SELF BRIEFING  
 ABOUT THE DESTINATION AND ALTERNATE AIRPORTS OF THIS FLIGHT  
 INCLUDING THE APPLICABLE INSTRUMENT APPROACH PROCEDURES, AIRPORT  
 FACILITIES, NOTAMS AND ALL OTHER RELEVANT PARTICULAR INFORMATION.

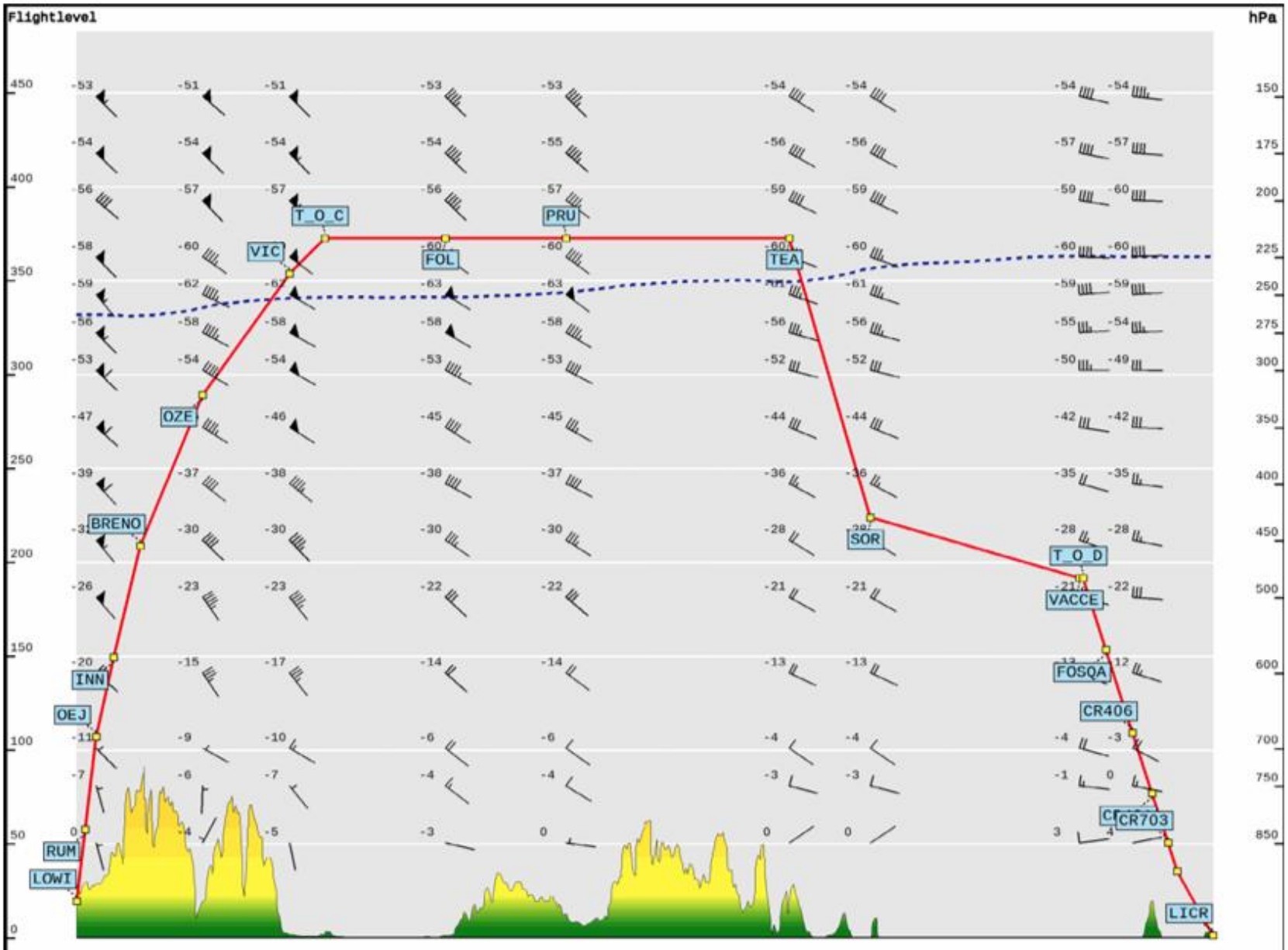
DISPATCHER: ARTURO FISHER PIC NAME: WIERDA, CEES

TEL: +1 800 555 0199 PIC SIGNATURE: .....





- Not for real world navigation -



Profile VALID 12 UTC ON 17.Feb.2025 06h Average

Flight: HV052B

Dep / Dest: INN / REG

Flight Maps

Show Details

Departure Airport - LOWI / INN - Innsbruck

Open Charts

Hide Details

Planned Runway	Elevation	Weather Category	METAR Ceiling	METAR Visibility
08	1,907 feet	VFR	3,400 feet	6 SM   9,650 m

Weather report generated on 17 Feb 2025 at 09:28 UTC.  
 Click [here](#) to view current weather instead.

METAR 17 Feb at 08:50 UTC

LOWI 170850Z AUTO 09004KT 060V120 9999 SCT026 BKN034 M01/M05 Q1020 NOSIG Copy

TAF 17 Feb at 05:15 UTC

LOWI 170515Z 1706/1806 10004KT 9999 FEW013 BKN020 TX05/1715Z  
 TNM06/1806Z  
 TEMPO 1706/1709 FEW008 BKN013  
 FM171100 08007KT 9999 FEW020  
 BECMG 1718/1720 VRB04KT Copy

NOTAMs 6 Total

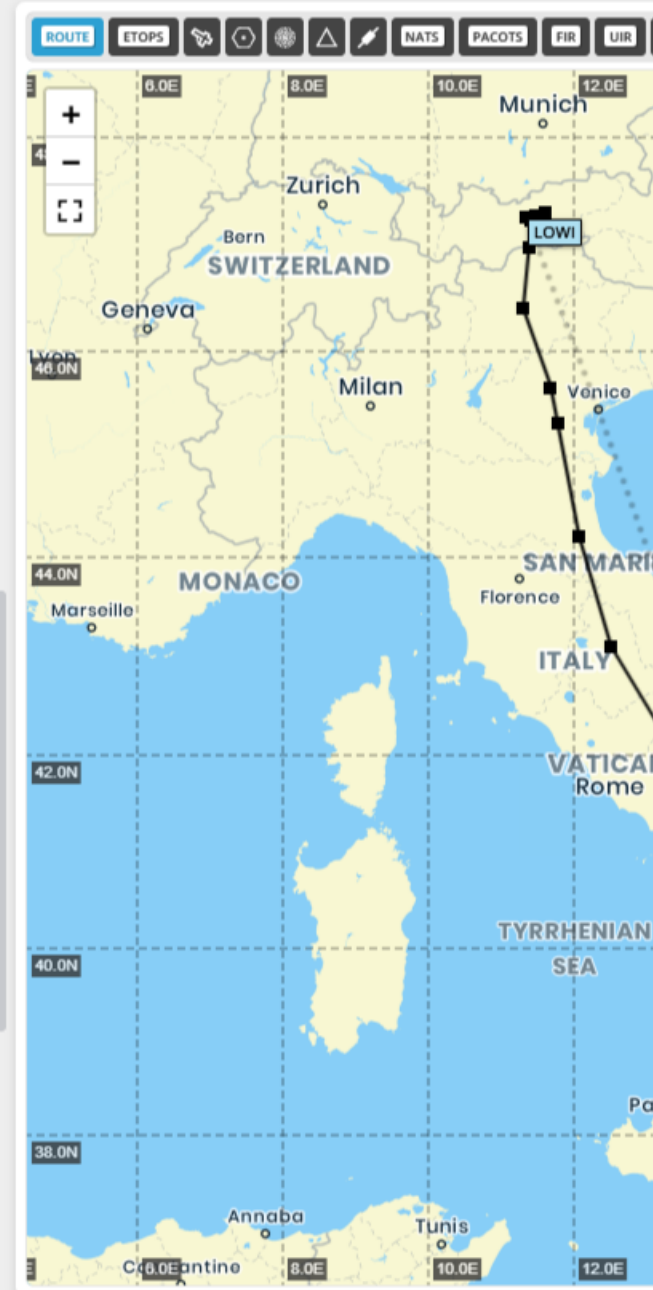
AIRPORT

New A0303/25 17-FEB-25 0800 - 20-FEB-25 1300

ASCENTS OF RADIOSONDES WILL TAKE PLACE, APRX 15NM EAST OF LOWI PSN:  
 471819N 0113720E AREA KOLSASS  
 COLOUR: CREME  
 MAX MASS: 0,325KG  
 BALLOON DIAMETER ON GND: 1.2M  
 F) GND G) UNL

72 A0295/25 15-FEB-25 0000 - 30-MAR-25 1900

GLIDER AREA CLOSED

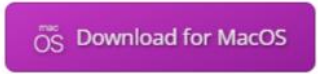
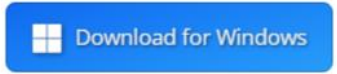


## The SimBrief Downloader

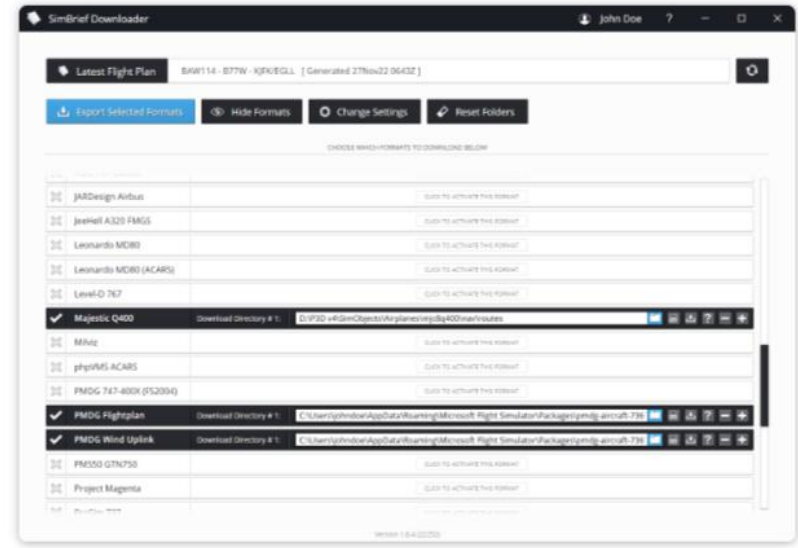
The SimBrief Downloader is a lightweight program that runs in the background and detects whenever you create a new SimBrief flight. This makes it possible to automatically export all of your selected FMS and route files into the proper add-on directories on your computer.

Other features include:

- Automatic detection of your flight simulators and add-ons
- The ability to set multiple download locations per format
- The ability to upload Active Sky weather snapshots
- Built-in update notifications and downloads
- A built-in program tutorial



Version 1.8.0 (21 Aug 2024)



## SimBrief Dispatch for MSFS 2020

Access SimBrief from inside Microsoft Flight Simulator! Flights can be planned either from the world map or via an in-game panel. The SimBrief Dispatch plugin also makes it easy to import your resulting flight plan into the simulator.

Usage instructions:

- Place the downloaded package into your MSFS 2020 community folder.
- To plan a flight from the world map, click the "SimBrief" button.
- Click the SimBrief icon in the toolbar to open the panel in flight.
- Click "Import into Sim" to import your route into the simulator.





- **If you have Flow Pro by Parallel 42 installed, please update it to the latest version. Otherwise the SimBrief button might not show on the World Map.**
- The base-sim VFR map must not be open while importing a flight through the in-game panel. After import, the VFR map can be opened again.
- If your aircraft of choice supports SimBrief imports, it is recommended to import through the aircraft, rather than through the world map or in-game panel.


[Download for MSFS 2020](#)

Version 1.2.5 (20 Dec 2024)



## SimBrief Dispatch for MSFS 2024

Access SimBrief from the Microsoft Flight Simulator 2024 EFB! The SimBrief EFB app makes it possible to plan, view, and import SimBrief flights directly from the simulator.

Usage instructions:

- Place the downloaded package into your MSFS 2024 community folder.
- Open the EFB in the sim, click the "More Apps" button, then "SimBrief Dispatch".
- Click "Sign In" to begin, and click "New Flight" to create a new flight plan.
- From the briefing page, click the "Import Route" button to copy your flight plan into the simulator.


[Download for MSFS 2024](#)

Version 1.0.0-beta.5 (09 Jan 2025)



Latest Flight Plan  ↻

↓ Export Selected Formats
👁 Hide Formats
⚙ Change Settings
🗑 Reset Folders

CHOOSE WHICH FORMATS TO DOWNLOAD BELOW

<input checked="" type="checkbox"/>	Microsoft ATR 42/72	<input type="button" value="CLICK TO ACTIVATE THIS FORMAT"/>
<input checked="" type="checkbox"/>	Milviz	<input type="button" value="CLICK TO ACTIVATE THIS FORMAT"/>
<input checked="" type="checkbox"/>	phpVMS ACARS	<input type="button" value="CLICK TO ACTIVATE THIS FORMAT"/>
<input checked="" type="checkbox"/>	PMDG 747-400X (FS2004)	<input type="button" value="CLICK TO ACTIVATE THIS FORMAT"/>

<input checked="" type="checkbox"/>	<b>PMDG Flightplan</b>	Download Directory # 1:	<input type="text" value="C:\Users\Gebruiker\AppData\Local\Packages\Microsoft.Flight"/> <span>📁</span> <span>📄</span> <span>↓</span> <span>?</span> <span>←</span> <span>→</span>
		Download Directory # 2:	<input type="text" value="C:\Users\Gebruiker\OneDrive\Documenten\Little Navmap Be"/> <span>📁</span> <span>📄</span> <span>↓</span> <span>?</span> <span>←</span> <span>→</span>
		Download Directory # 3:	<input type="text" value="C:\Users\Gebruiker\AppData\Local\Packages\Microsoft.Flight"/> <span>📁</span> <span>📄</span> <span>↓</span> <span>?</span> <span>←</span> <span>→</span>
		Download Directory # 4:	<input type="text" value="C:\Users\Gebruiker\AppData\Local\Packages\Microsoft.Flight"/> <span>📁</span> <span>📄</span> <span>↓</span> <span>?</span> <span>←</span> <span>→</span>
		Download Directory # 5:	<input type="text" value="C:\Users\Gebruiker\AppData\Local\Packages\Microsoft.Flight"/> <span>📁</span> <span>📄</span> <span>↓</span> <span>?</span> <span>←</span> <span>→</span>
		Download Directory # 6:	<input type="text" value="C:\Users\Gebruiker\AppData\Local\Packages\Microsoft.Flight"/> <span>📁</span> <span>📄</span> <span>↓</span> <span>?</span> <span>←</span> <span>→</span>

<input checked="" type="checkbox"/>	<b>PMDG Wind Uplink</b>	Download Directory # 1:	<input type="text" value="C:\Users\Gebruiker\AppData\Local\Packages\Microsoft.Flight"/> <span>📁</span> <span>📄</span> <span>↓</span> <span>?</span> <span>←</span> <span>→</span>
		Download Directory # 2:	<input type="text" value="C:\Users\Gebruiker\AppData\Local\Packages\Microsoft.Flight"/> <span>📁</span> <span>📄</span> <span>↓</span> <span>?</span> <span>←</span> <span>→</span>
		Download Directory # 3:	<input type="text" value="C:\Users\Gebruiker\AppData\Local\Packages\Microsoft.Flight"/> <span>📁</span> <span>📄</span> <span>↓</span> <span>?</span> <span>←</span> <span>→</span>
		Download Directory # 4:	<input type="text" value="C:\Users\Gebruiker\AppData\Local\Packages\Microsoft.Flight"/> <span>📁</span> <span>📄</span> <span>↓</span> <span>?</span> <span>←</span> <span>→</span>
		Download Directory # 5:	<input type="text" value="C:\Users\Gebruiker\AppData\Local\Packages\Microsoft.Flight"/> <span>📁</span> <span>📄</span> <span>↓</span> <span>?</span> <span>←</span> <span>→</span>

<input checked="" type="checkbox"/>	PMS50 GTN750	<input type="button" value="CLICK TO ACTIVATE THIS FORMAT"/>
<input checked="" type="checkbox"/>	Project Manana	<input type="button" value="CLICK TO ACTIVATE THIS FORMAT"/>

- Place the downloaded package into your MSFS 2020 community folder.
- To plan a flight from the world map, click the "SimBrief" button.
- Click the SimBrief icon in the toolbar to open the panel in flight.
- Click "Import" into SimBrief to import your route into the simulator.

The screenshot shows the SimBrief simulator interface. On the left, there are menu options: EDIT FLIGHT, VIEW FLIGHT PLAN, SAVED FLIGHTS, SAVED AIRPLANS, WEATHER AND NOTAM, and PERFORMANCE AND TOOLS. The main area displays flight information for flight number FFT123, including origin (KJFK), destination (KJFK), aircraft (B738), and departure/arrival times. A 'Flight Plan Summary' table is visible at the bottom, showing altitude, cruise, descent, and other parameters.

Altitude	Cruise	Descent	Flt #	Wind Comp	CRJ

Latest Flight Plan

TRA52B - B738 - LOWI/LICR [ Generated 17Feb25 0928Z ]




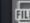

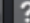


Export Selected Formats

Hide Formats

Change Settings

Reset Folders

CHOOSE WHICH FORMATS TO DOWNLOAD BELOW

<input type="checkbox"/>	Flight1 GTN		CLICK TO ACTIVATE THIS FORMAT
<input type="checkbox"/>	FlightFactor 757 V2		CLICK TO ACTIVATE THIS FORMAT
<input type="checkbox"/>	FlightFactor 767-777		CLICK TO ACTIVATE THIS FORMAT
<input type="checkbox"/>	FlightFactor A320		CLICK TO ACTIVATE THIS FORMAT
<input type="checkbox"/>	FS Commander		CLICK TO ACTIVATE THIS FORMAT
<input type="checkbox"/>	FS2004		CLICK TO ACTIVATE THIS FORMAT
<input checked="" type="checkbox"/>	FS2020	Download Directory # 1:	C:\Users\Gebruiker\AppData\Local\Packages\Microsoft.Flight      
<input type="checkbox"/>	FS2020 (No SID/STAR)		CLICK TO ACTIVATE THIS FORMAT
<input type="checkbox"/>	FS2024		CLICK TO ACTIVATE THIS FORMAT
<input type="checkbox"/>	FSX/P3D		CLICK TO ACTIVATE THIS FORMAT
<input type="checkbox"/>	FSX/P3D (No SID/STAR)		CLICK TO ACTIVATE THIS FORMAT
<input type="checkbox"/>	FSLabs A320		CLICK TO ACTIVATE THIS FORMAT
<input type="checkbox"/>	GeoFS Flight Plan		CLICK TO ACTIVATE THIS FORMAT

Version 1.8.0 (24233)

- Place the downloaded package into your MSFS 2020 community folder.
- To plan a flight from the world map, click the "SimBrief" button.
- Click the SimBrief icon in the toolbar to open the panel in flight.

The screenshot shows the SimBrief software interface. On the left, there is a sidebar menu with options: EDIT FLIGHT, VIEW FLIGHT PLAN, SAVED FLIGHTS, SAVED AIRPLANES, RELATED AND NOTAM, and PERFORMANCE AND TURNS. The main area displays flight information for flight number FT1123, including date (02 Nov 24), departure (02:00 UTC), arrival (05:08 UTC), air time (01:28), and altitude (01:56). Below this, there is a section for 'Flight Plan Summary' with columns for Altitude, Cruise, Descent, Wind, Altitude, and Fuel Burn.

**Flight Plan Downloads** - Get the [SimBrief Downloader](#) to install these files automatically

Show Details ▾

**Prefile on a Network** - File a flight plan on an online virtual flying network

Show Details ▾

NONE Copy

- ATC Flight Plan Show Details ▾
- Briefing Preview - [How do I read this briefing?](#) Show Details ▾
- Runway Analysis - [About takeoff and landing calculations](#) Show Details ▾
- Flight Maps Show Details ▾
- Departure Airport - LOWI / INN - Innsbruck Open Charts Show Details ▾
- Arrival Airport - LICR / REG - Reggio Calabria Open Charts Show Details ▾
- Alternate Airport - LICC / CTA - Fontanarossa Open Charts Show Details ▾

**Flight Plan Downloads** - Get the [SimBrief Downloader](#) to install these files automatically Show Details ▾

**Profile on a Network** - File a flight plan on an online virtual flying network Hide Details ▲

Network	Website	Profile
VATSIM	my.vatsim.net	Profile
IVAO	fpl.iviao.aero	Profile
PilotEdge	www.pilotedge.net	Profile
POSCON	hq.poscon.net	Profile
SayIntentions.AI	www.sayintentions.ai	Profile



# INTERNATIONAL FLIGHT PLAN

09:37:26 UTC

7 - Aircraft Identification: <=(FPL  - 8 - Flight Rules:  - Type of Flight:  <=

9 - Number:  - Type of Aircraft:  / Wake Turbulence Category:  - Equipment:  / Transponder:  <=

13 - Departure Aerodrome:  - Departure Time:  <=

15 - Cruising Speed:  - 448 - Level:  - 370

Route:  <=

16 - Destination Aerodrome:  - Total EET:  - Altn Aerodrome:  - 2nd Altn Aerodrome:  <=

18 Other Information:  <=

World Tour  Live streaming

## Supplementary Information

19 - Endurance: -E/  - People on Board: -P/  - Pilot in Command: -C/  <=



# Upcoming Flight Plans

## SEARCH FOR A FLIGHT PLAN

Callsign <input type="text" value="Callsign"/>	Departure <input type="text" value="Departure"/>	Arrival <input type="text" value="Arrival"/>	Aircraft <input type="text" value="Aircraft"/>
---	---	---	---

EOBT	Callsign	Departure	Arrival	Aircraft	Actions
2025-02-17   09:45:00	TRA52B	LOWI	LICR	B738	





**Edit** **Hide**

## Flights

**+ New Flight** **↓ Import Flight**

Filter Flights

Sort By **Name** **Date**

**LICR to LOWI (TRA52B)**  
 LICR/33 RCA1A RCA DCT SOR M736 TEA  
 DCT PRU DCT FOL DCT VIC DCT OZE DCT  
 BRENO BRENA4B LOWI/ELMEM.R08-Z  
 Monday 17th of February 2025

**EHAM to EGLL (TRA52B)**  
 EHAM/36L VOLA3V IDRID L980 LOGAN  
 LOGA2H EGLL/LAM.I09L  
 Sunday 16th of February 2025

**LOWI to LICR (TRA52T)**  
 LOWI/26 RT11R RTT DCT BRENO DCT OZE  
 DCT VIC DCT FOL DCT PRU DCT TEA M736  
 SOR Q58 FOSQA FOSQ1E LICR/EKTEM.R33-G  
 Friday 14th of February 2025

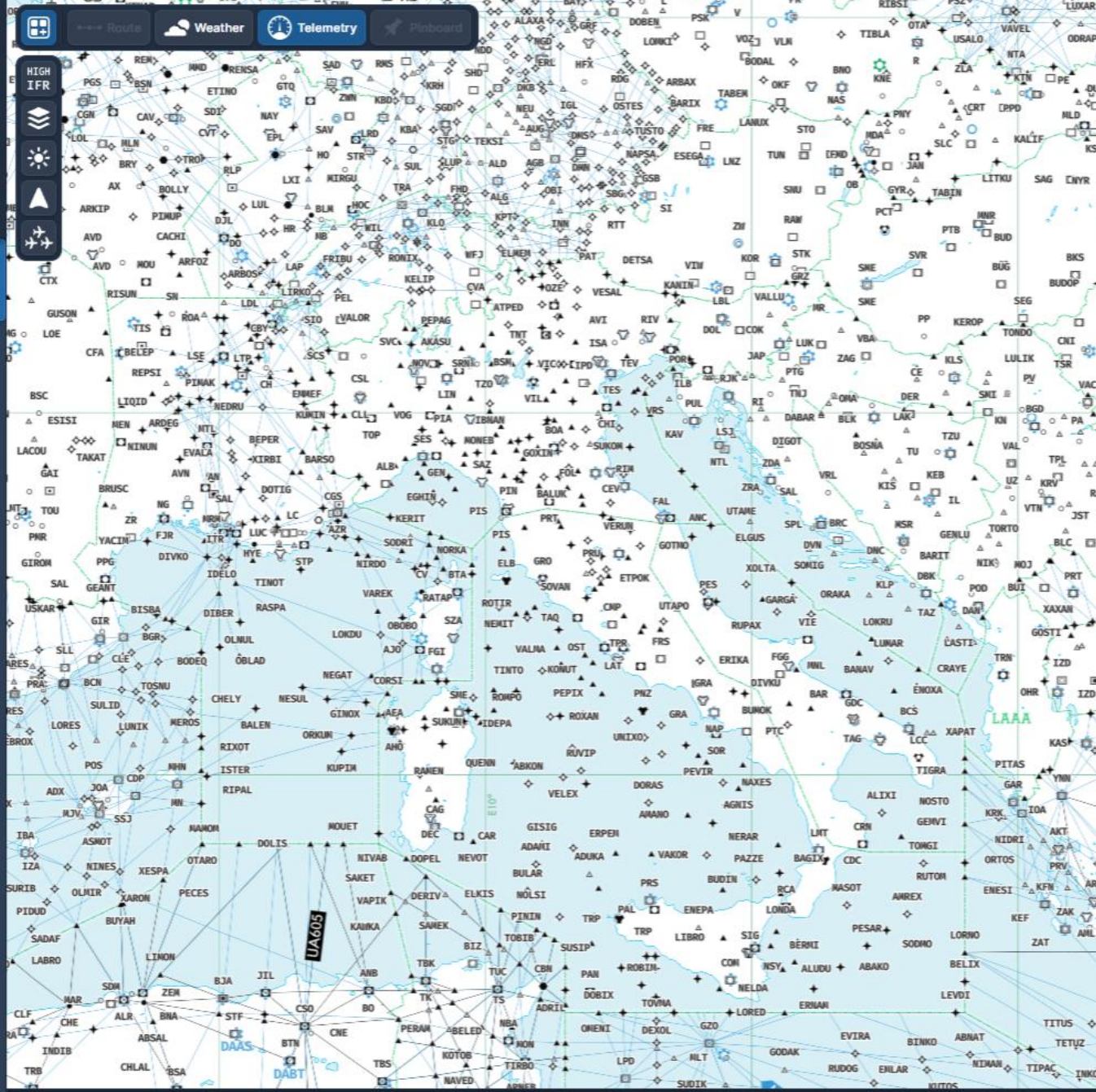
**EHAM to EGLL (TRA52B)**  
 EHAM/36L VOLA3V IDRID L980 LOGAN  
 LOGA2H EGLL/LAM.L09L  
 Friday 14th of February 2025

**EHAM to VRMM (KLM52B)**  
 EHAM/24 ARNE3S ARNEM L620 HMM DCT  
 NOKMA DCT TALEG L620 PIK1B DCT OMELO  
 DCT GOLOP DCT KOZLI DCT ROMIS DCT  
 KREMI DCT DEMOP DCT MEGIK DCT ARTAT  
 UP975 ERGUN UL124 EVSAS UM688 SIDAD  
 DCT IMDAT B416 ORSAR DCT TATLA L223  
 TARDI DCT GIDAN DCT KITAL L894 LELEM  
 LELE2A VRMM/REGAD.I36-W  
 Thursday 13th of February 2025

**EHAM to LEZL (TRA52B)**  
 EHAM/18L KUDA3E WOODY N872 MEDIL  
 UN872 LESDO UM728 RESMI UN857 DISAK  
 DCT ARKIP DCT ARNAV DCT LMG DCT UVELI  
 DCT OSMOB DCT ARVID T424 PPN N857  
 VASUM N725 DGO N976 NEA N864 MONTO  
 N857 HIJ HIJ4E LEZL/27  
 Thursday 13th of February 2025

**LPPR to LEBB (TRA52B)**  
 LPPR/35 BELD9E BELDU DCT ADORO L155  
 ZMR N976 DGO DG02X LEBB/I12-Y  
 Wednesday 12th of February 2025

**EHAM to LHBP (KLM1363)**





Edit

Hide

# Flights

+ New Flight

↓ Import Flight

🔍 Filter Flights

Sort By

Name

Date



## LICR to LOWI (TRA52B)

LICR/33 RCA1A RCA DCT SOR M736 TEA  
DCT PRU DCT FOL DCT VIC DCT OZE DCT  
BRENO BREN4B LOWI/ELMEM.R08-Z

Monday 17th of February 2025



## EHAM to EGLL (TRA52B)

EHAM/36L VOLA3V IDRID L980 LOGAN  
LOGA2H EGLL/LAM.I09L

Sunday 16th of February 2025



## LOWI to LICR (TRA52B)



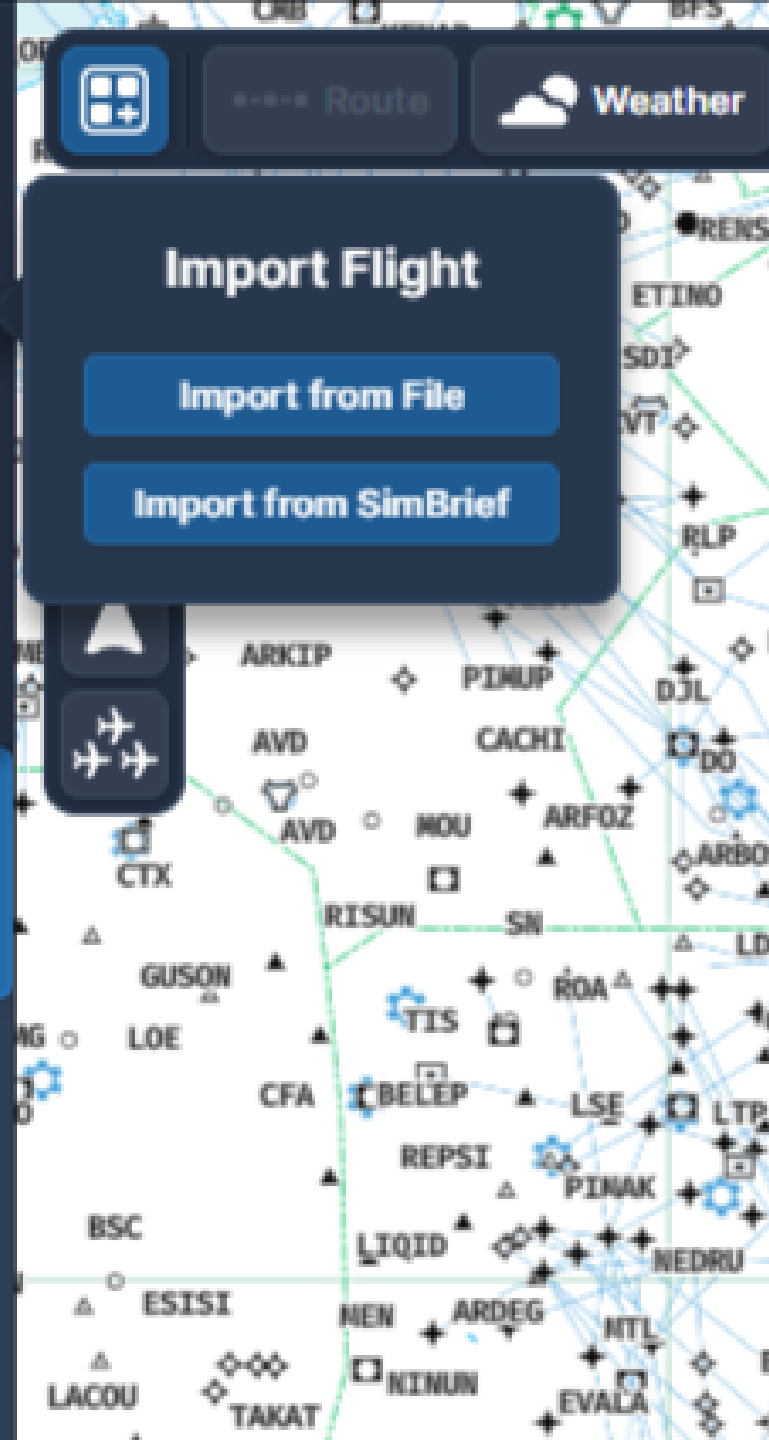
Route

Weather

### Import Flight

Import from File

Import from SimBrief



# LOWI to LICR (TRA52B) ☆

General Options Export

View SimBrief OFP

## Origin

**LOWI / INN**  
VFR ●  
Innsbruck  
Innsbruck, Austria

Runway **08**  
← 0 kts  
↓ 3 kts

Departure **BREN2J** Transition **BRENO**

## Destination

**LICR / REG**  
VFR ●  
Reggio Calabria  
Reggio Calabria, Italy

Runway **33**  
← 1 kt  
↓ 7 kts

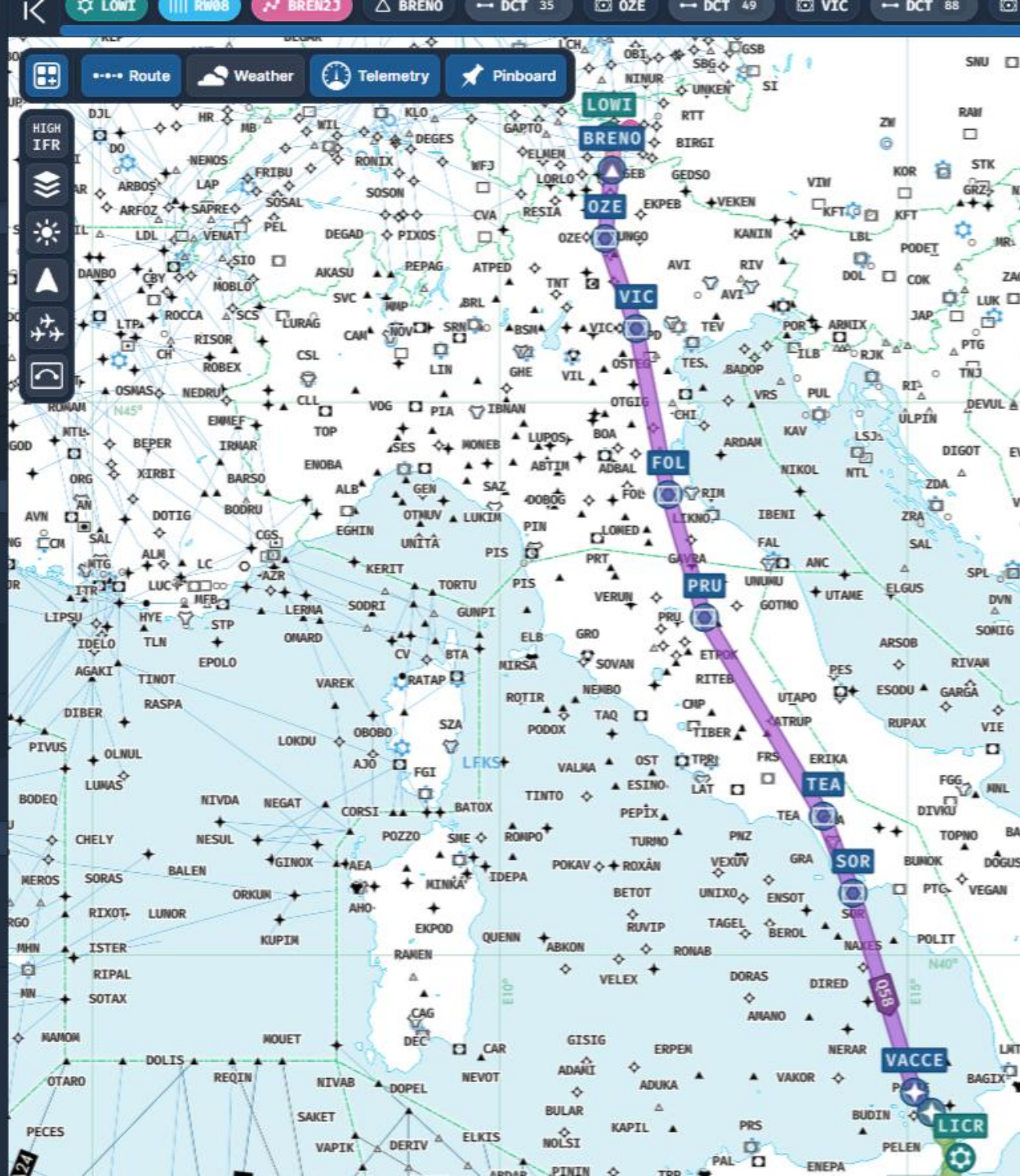
Arrival **FOSQ1E** Transition **FOSQA**

11 Approaches available Select

## Destination Alternates

**LICC / CTA**  
VFR ●  
Fontanarossa  
Catania, Italy

Add Alternate



- HIGH IFR
- [Stacked layers icon]
- [Sun icon]
- [Up arrow icon]
- [Planes icon]
- [Moon icon]

### Online Networks (BETA)

VATSIM

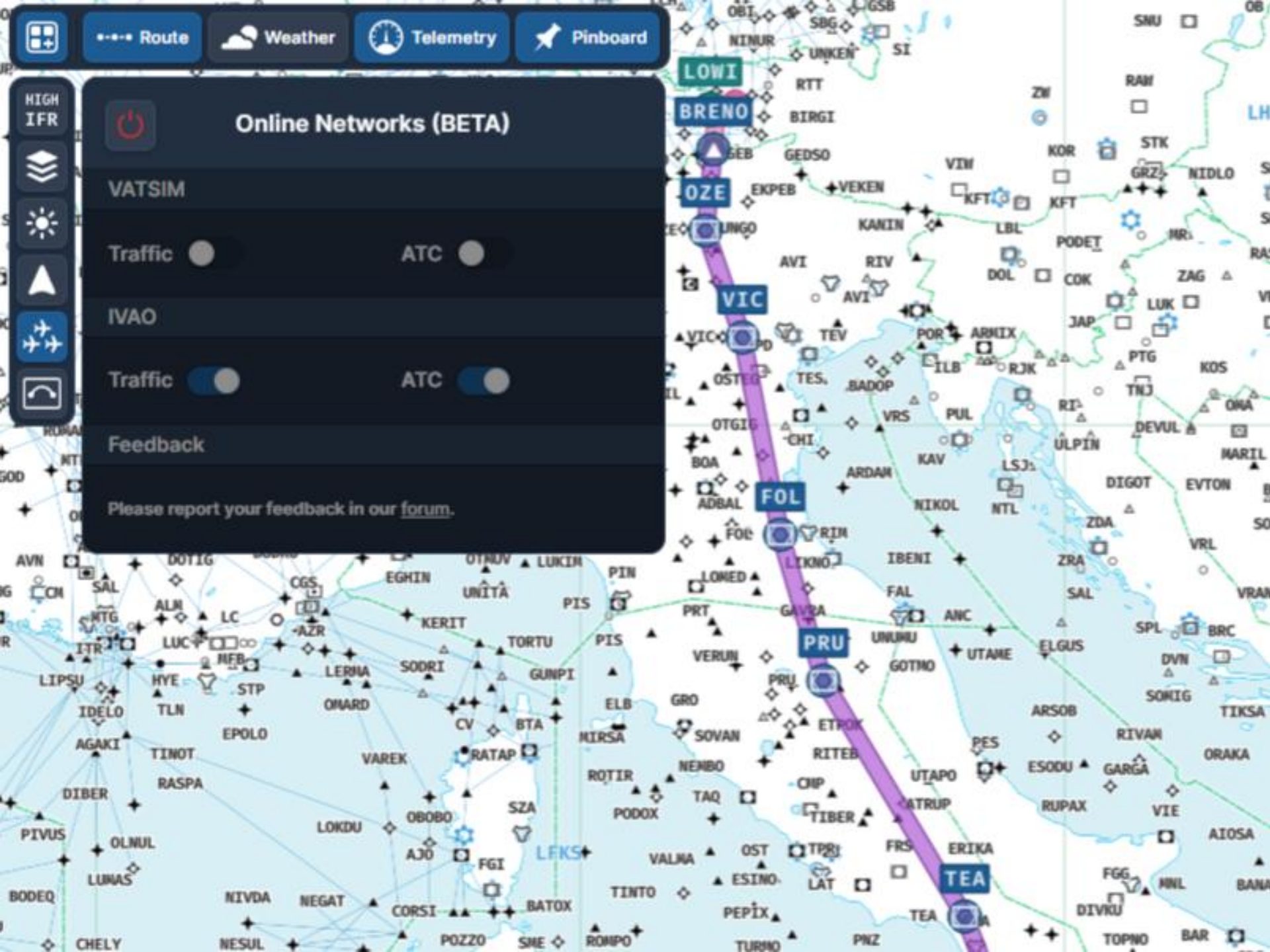
Traffic  ATC

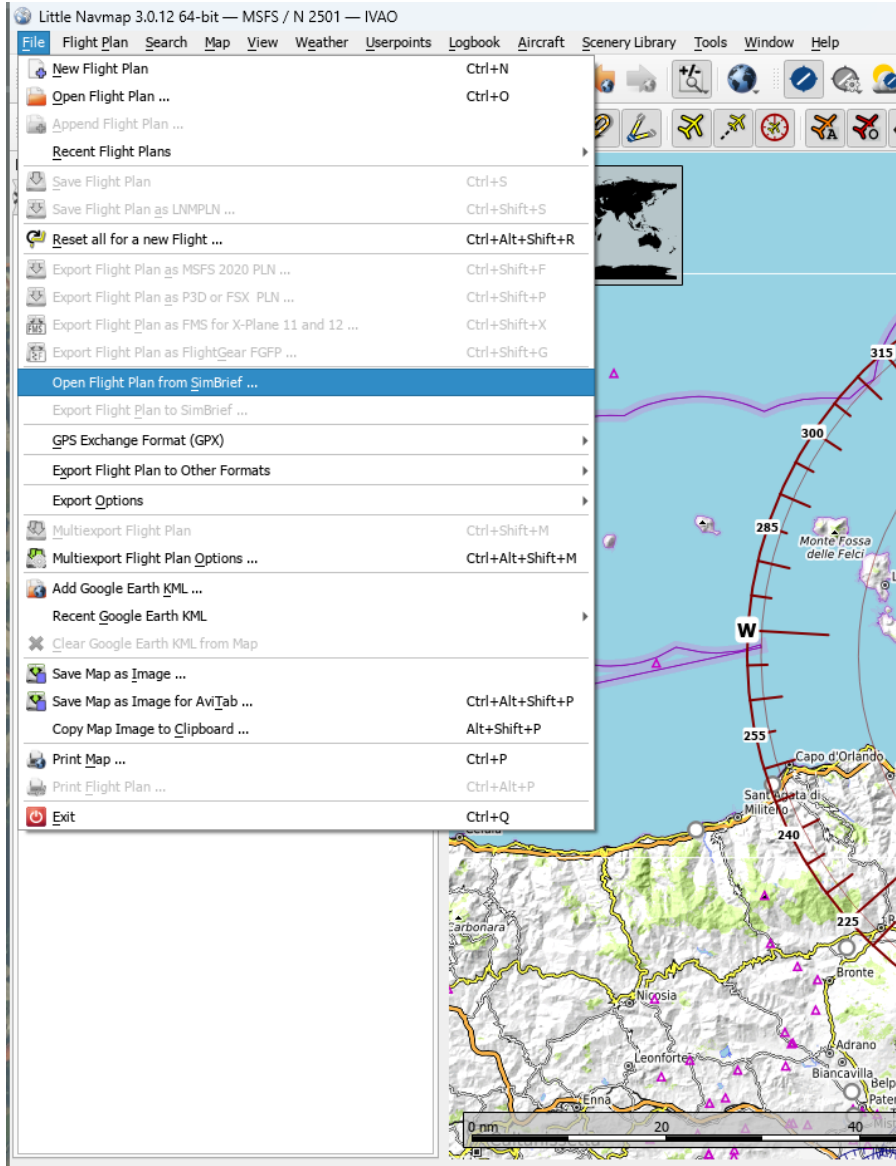
IVAO

Traffic  ATC

Feedback

Please report your feedback in our [forum](#).





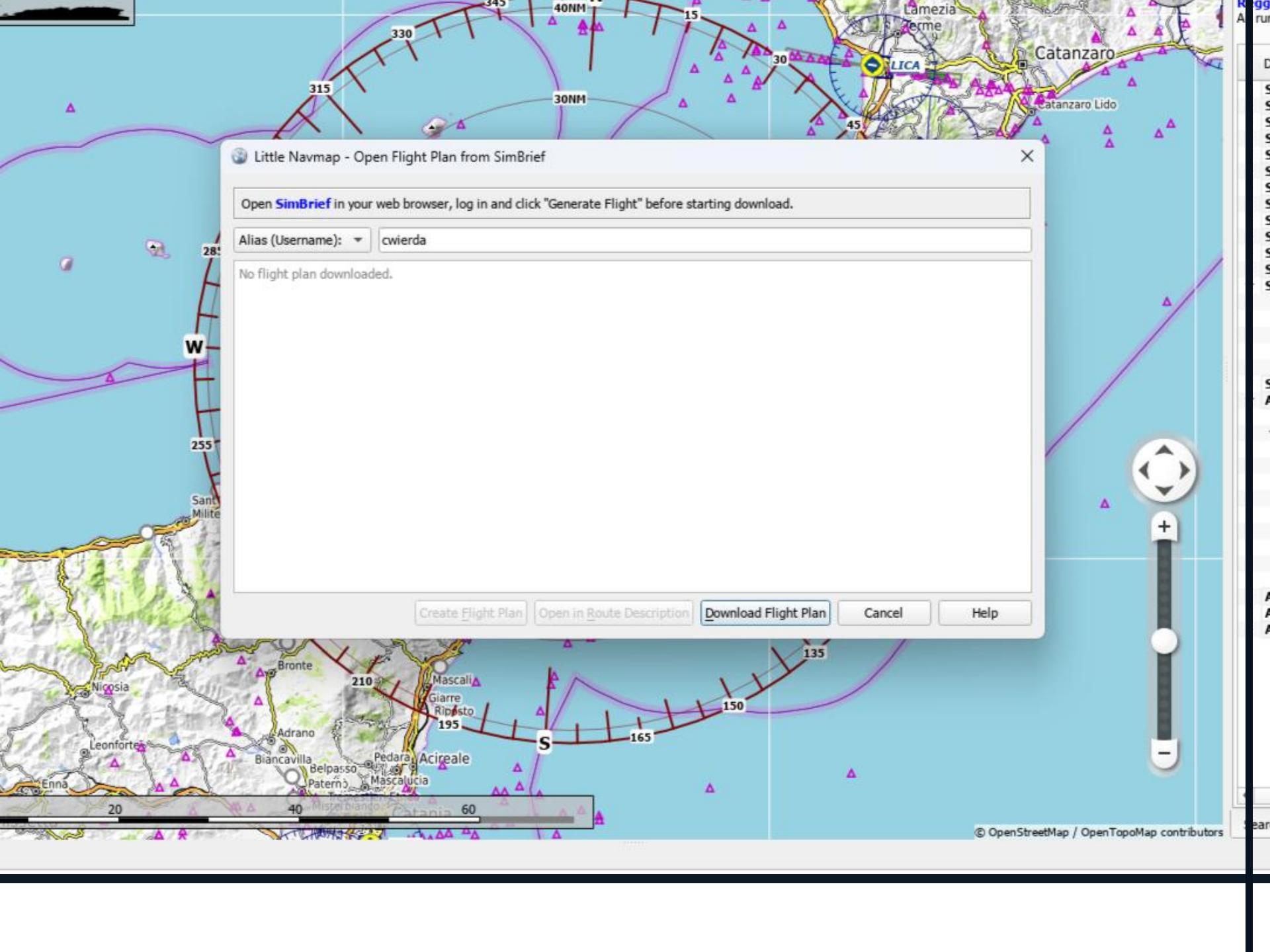
Little Navmap - Open Flight Plan from SimBrief

Open [SimBrief](#) in your web browser, log in and click "Generate Flight" before starting download.

Alias (Username):

No flight plan downloaded.

[Create Flight Plan](#) [Open in Route Description](#) [Download Flight Plan](#) [Cancel](#) [Help](#)



Little Navmap - Open Flight Plan from SimBrief

Open [SimBrief](#) in your web browser, log in and click "Generate Flight" before starting download.

Alias (Username):

Flight successfully downloaded. Reading of route description successful.

**Ignoring speed and altitude at waypoint TEA. If necessary, adjust your cruising altitude manually.**

Flight plan from **Innsbruck (LOWI)** to **Reggio Calabria (LICR)**.

Distance without procedures is **639 NM**.

Using cruise altitude **37.000 ft** for flight plan.

Depart using SID **BREN2J** and runway **08**.

Arrive using STAR **FOSQ1E** and runway **33**.

Land at runway **33**.

Alternate airport is **LICC**.

Route description:

**LOWI/08 N0448F370 BREN2J BRENO DCT OZE DCT VIC DCT FOL DCT PRU DCT TEA/N0371F190 M736 SOR Q58 FOSQA FOSQ1E LICR/33 LICC.**

Found 12 waypoints:

**LOWI BRENO OZE VIC FOL PRU TEA SOR VACCE FOSQA LICR LICC.**

Create Flight Plan

Open in Route Description

Download Flight Plan

Cancel

Help

Create flight plan from downloaded information



Flight Planning  
 Flight Plan Remarks X Flight Plan \* X  
 37,000 ft IFR

Innsbruck (LOWI) to Reggio Calabria (LICR)  
 Distance 636 NM, time 4 h 41 m.  
 Takeoff from 08, 77°M, 6,552 ft. Depart using SID BREN2J.  
 Arrive using STAR FOSQ1E.  
 Land at 33, 329°M, 5,915 ft, 95 ft elevation, PAPI4.

Ident	Name	Procedure
1	LOWI Innsbruck	Departure
2	RW08	SID BREN2J
3		SID BREN2J
4	RUM Rum	SID BREN2J
5	OEJ Oej LOC	SID BREN2J
6	INN Innsbruck	SID BREN2J
7	BRENO	SID BREN2J
8	OZE Bolzano	
9	VIC Vicenza	
10	FOL Forli	
11	PRU Perugia	
12	TEA Teano	
13	SOR Sorrento	
14	VACCE	
15	FOSQA	STAR FOSQ1E
16	CR406	STAR FOSQ1E
17	CR401	STAR FOSQ1E
18	CR703	STAR FOSQ1E
19	EKTEM	STAR FOSQ1E
20	RW33+3	Approach
21	RW33	Approach
22	LICR Reggio Calabria	Destination
23	LICC Fontanarossa	Alternate



Found problems in flight plan. Click here for details.



Created new flight plan.

Connected (MSFS) AP,H,>40,E,C,M,AFV, /A,S





AUTO CRUISE Sim Rate: TK

10:52 LOCAL / 09:52 UTC



Electronic Flight Bag



Performance Tool



Ground Operations



**PMDG**  
Universal Flight Tablet





AFDS FLOOD



OFF

MENU

<FMC

<ACT>

<DLNK

<DFDAU

PMDG  
SETUP>

FS ACTIONS>

INIT REF	RTE	CLB	CRZ	DES	- BRT +		
MENU	LEGS	DEP ARR	HOLD	PROG	EXEC		
N1 LIMIT	FIX	A	B	C	D	E	
PREV PAGE	NEXT PAGE	F	G	H	I	J	
1	2	3	K	L	M	N	O
4	5	6	P	Q	R	S	T
7	8	9	U	V	W	X	Y
.	0	+/-	Z	SP	DEL	/	CLR

AFDS FLOOD

OFF ✓

# ROUTE FILES

<PMDG 737 (661)

<SIMBRIEF RTE **LOWI-LICR**

-----  
<RETURN

INIT  
REF

RTE

CLB

CRZ

DES

- BRT +

MENU

LEGS

DEP  
ARR

HOLD

PROG

EXEC

NT  
LIMIT

FIX

A

B

C

D

E

PREV  
PAGE

NEXT  
PAGE

F

G

H

I

J

1

2

3

K

L

M

N

O

4

5

6

P

Q

R

S

T

7

8

9

U

V

W

X

Y

.

0

+/-

Z

SP

DEL

/

CLR

OFF ↙

ORIGIN DEST  
----- 00000  
CO ROUTE FLT NO.  
-----  
FLT PLAN  
REQUEST >  
-----

INIT REF	RTE	CLB	CRZ	DES	- BRT +		
MENU	LEGS	DEP ARR	HOLD	PROG	EXEC		
N1 LIMIT	FIX	A	B	C	D	E	
PREV PAGE	NEXT PAGE	F	G	H	I	J	
1	2	3	K	L	M	N	O
4	5	6	P	Q	R	S	T
7	8	9	U	V	W	X	Y
.	0	+/-	Z	SP	DEL	/	CLR

AFDS FLOOD



OFF ✓

FLIGHT ID TRA52B  
DEPT LOWI DEST LICR ALTN LICC  
INIT ALT CI DIST  
FL370 31 593NM

ZFW 58.9 RSRV 2.7 BLK\_FUEL 7.7

<SET PAYLOAD SET FUEL>

-----  
<RETURN SELECT RTE>

INIT REF	RTE	CLB	CRZ	DES	- BRT +		
MENU	LEGS	DEP ARR	HOLD	PROG	EXEC		
NI LIMIT	FIX	A	B	C	D	E	
PREV PAGE	NEXT PAGE	F	G	H	I	J	
1	2	3	K	L	M	N	O
4	5	6	P	Q	R	S	T
7	8	9	U	V	W	X	Y
.	0	+/-	Z	SP	DEL	/	CLR



FLIGHT ID TRAS2B  
DEPT DEST ALTN  
LOWI LICR LICC  
INIT ALT CI DIST  
FL370 31 593NM

ZFW RSRV BLK FUEL  
58.9 2.7 7.7

<SET PAYLOAD SET FUEL>  
-----  
<RETURN SELECT RTE>  
SIMBRIEF BLOCK FUEL SET

INIT REF	RTE	CLB	CRZ	DES	- BRT +		
MENU	LEGS	DEP ARR	HOLD	PROG	EXEC		
NI LIMIT	FIX	A	B	C	D	E	
PREV PAGE	NEXT PAGE	F	G	H	I	J	
1	2	3	K	L	M	N	O
4	5	6	P	Q	R	S	T
7	8	9	U	V	W	X	Y
.	0	+/-	Z	SP	DEL	/	CLR

CSSM



AFDS FLOOD



RTE 1/2  
ORIGIN DEST  
LOWI LICR  
CO ROUTE FLT NO.  
----- TRA52B  
RUNWAY FLT PLAN  
----- REQUEST

INIT REF	RTE	CLB	CRZ	DES	- BRT +		
MENU	LEGS	DEP ARR	HOLD	PROG	EXEC		
NI LIMIT	FIX	A	B	C	D	E	
PREV PAGE	NEXT PAGE	F	G	H	I	J	
1	2	3	K	L	M	N	O
4	5	6	P	Q	R	S	T
7	8	9	U	V	W	X	Y

AFDS FLOOD



OFF

RTE

ORIGIN	1 / 2
LOWI	DEST
CO ROUTE	LICR
-----	FLT NO.
	TRA52B
RUNWAY	
-----	
-----	

ROUTE UPLINK LOADING

INIT REF	RTE	CLB	CRZ	DES	- BRT +		
MENU	LEGS	DEP ARR	HOLD	PROG	EXEC		
NT LIMIT	FIX	A	B	C	D	E	
PREV PAGE	NEXT PAGE	F	G	H	I	J	
1	2	3	K	L	M	N	O
4	5	6	P	Q	R	S	T
7	8	9	U	V	W	X	Y
.	0	+/-	7	SP	DEL	/	CLR

MSG



AFDS FLOOD



OFF

```
ACT RTE 1/3
ORIGIN DEST
LOWI LICR
CO ROUTE FLT NO.
----- TRA52B
RUNWAY FLT PLAN
----- REQUEST>
-----
<SAVE
-----
<ALTN DEST PERF INIT>
```

INIT  
REF

RTE

CLB

CRZ

DES

- BRT +

MENU

LEGS

DEP  
ARR

HOLD

PROG

EXEC

NT  
LIMIT

FIX

A

B

C

D

E

PREV  
PAGE

NEXT  
PAGE

F

G

H

I

J

1

2

3

K

L

M

N

O

4

5

6

P

Q

R

S

T

7

8

9

U

V

W

X

Y

AFDS FLOOD

OFF

```

PERF INIT          1/2
GW/CRZ CG TRIP/CRZ ALT
000.0/20.0%      /00000
PLAN/FUEL        CRZ WIND
---.-/7.7       ---°/---
ZFW              T/C OAT
000.0           ---°F ---°C
RESERVES         TRANS ALT
00.0            10000
COST INDEX      PERF INIT
000             REQUEST>
-----
<INDEX          N1 LIMIT>

```

INIT REF	RTE	CLB	CRZ	DES	- BRT +		
MENU	LEGS	DEP ARR	HOLD	PROG	EXEC		
N1 LIMIT	FIX	A	B	C	D	E	
PREV PAGE	NEXT PAGE	F	G	H	I	J	
1	2	3	K	L	M	N	O
4	5	6	P	Q	R	S	T
7	8	9	U	V	W	X	Y
.	0	+/-	Z	SP	DEL	/	CLR

AFDS FLOOD



OFF

```

PERF INIT 1/2
GW/CRZ CG TRIP/CRZ ALT
000.0/20.0% /00000
PLAN/FUEL CRZ WIND
---.7/7.7 ---°/---
ZFW T/C OAT
000.0 ---°F ---°C
RESERVES TRANS ALT
00.0 10000
COST INDEX
000
PERF INIT UPLINK
<LOAD N1 LIMIT>
PERF INIT UPLINK READY

```

INIT REF RTE CLB CRZ DES - BRT +

MENU LEGS DEP ARR HOLD PROG EXEC

N1 LIMIT FIX A B C D E

PREV PAGE NEXT PAGE F G H I J

1 2 3 K L M N O

4 5 6 P Q R S T

7 8 9 U V W X Y

· 0 +/- Z SP DEL / CLR

MSG

AFDS FLOOD



OFF

```
PERF INIT 1/2
GW/CRZ CG TRIP/CRZ ALT
66.6/20.0% FL379/FL370
PLAN/FUEL CRZ WIND
---./-/7.7 304°/ 35
ZFW T/C OAT
58.9 -59
RESERVES TRANS ALT
2.7 10000
COST INDEX
31
-----
<ERASE N1 LIMIT>
PERF INIT UPLINK
```

INIT REF RTE CLB CRZ DES - BRT +

MENU LEGS DEP ARR HOLD PROG EXEC

N1 LIMIT FIX A B C D E

PREV PAGE NEXT PAGE F G H I J

1 2 3 K L M N O

4 5 6 P Q R S T

7 8 9 U V W X Y

0 000

MAIN PANEL DUs

LOWER DU



TEST

LIGHTS

TEST

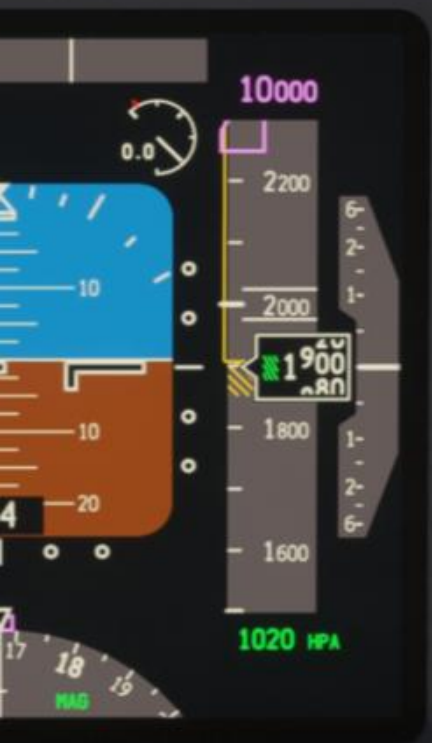
DIM



DIM

QUALIFIED FOR EXT. OVERWATER OPERATIONS

ISFD HEADING FROM LEFT IRS ONLY







Unload Hide

# LOWI to LICR (TRA52B) ☆

General Options Export

View SimBrief OFP

## Origin

### LOWI / INN

VFR ●  
Innsbruck  
Innsbruck, Austria



Runway  
**08** → 2 kts  
↓ 0 kts



Departure  
**BREN2J** Transition  
**BRENO**



## Destination

### LICR / REG

VFR ●  
Reggio Calabria  
Reggio Calabria, Italy



Autoroute

Runway  
**33** ← 1 kt  
↓ 8 kts



Arrival  
**FOSQ1E** Transition  
**FOSQA**



11 Approaches available

Select

## Destination Alternates

### LICC / CTA

VFR ●  
Fontanarossa  
Catania, Italy



Add Alternate

LOWI RW08 BREN2J BRENO DCT 35 OZE DCT 49 VIC DCT 88 FOL DCT

Route Weather Telemetry Pinboard

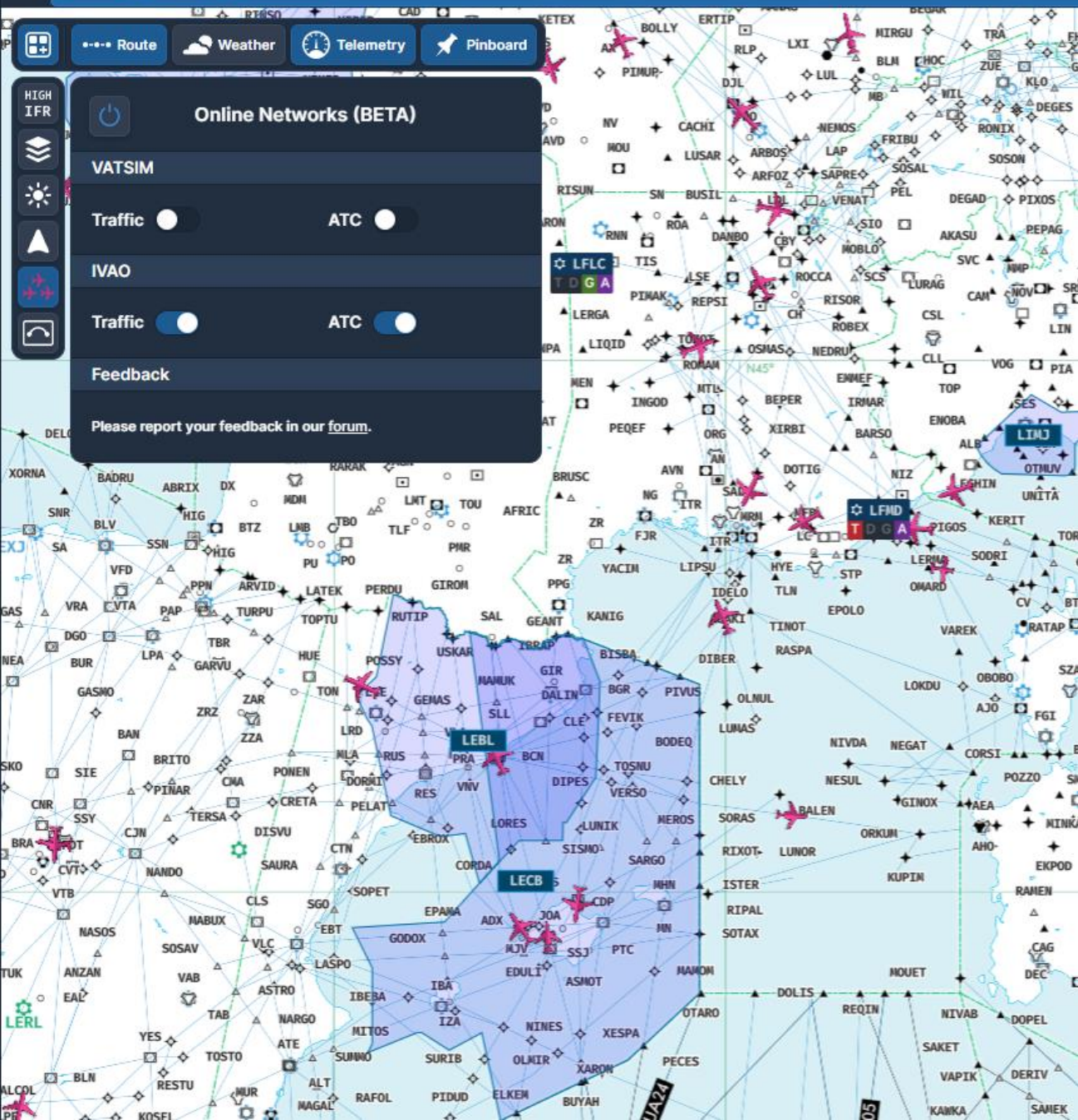
**Online Networks (BETA)**

VATSIM  
Traffic ● ATC ●

IVAO  
Traffic ● ATC ●

Feedback

Please report your feedback in our [forum](#).



User 206553

EWG1KH A320

EDDK

Cruising

LICC

366/873 NM

ETA 11:13Z in 1h2m / 507 NM

GS

487 kts

TAS

N/A

Altitude

37198 ft

Heading

163°

## LFMD Controllers

Facility	Controller	Level	Online	Frequency
<b>TWR</b>	User 746045	<b>AS1</b>	00:11	<b>118.625</b>

```
Cannes Tower Information BRAVO recorded  
at 0959z LFMD 170930Z AUTO VRB02KT 9999  
BKN046 BKN240 12/06 Q1016 NOSIG ARR RWY 17  
/ DEP RWY 17 CONFIRM ATIS INFO BRAVO on  
initial contact
```

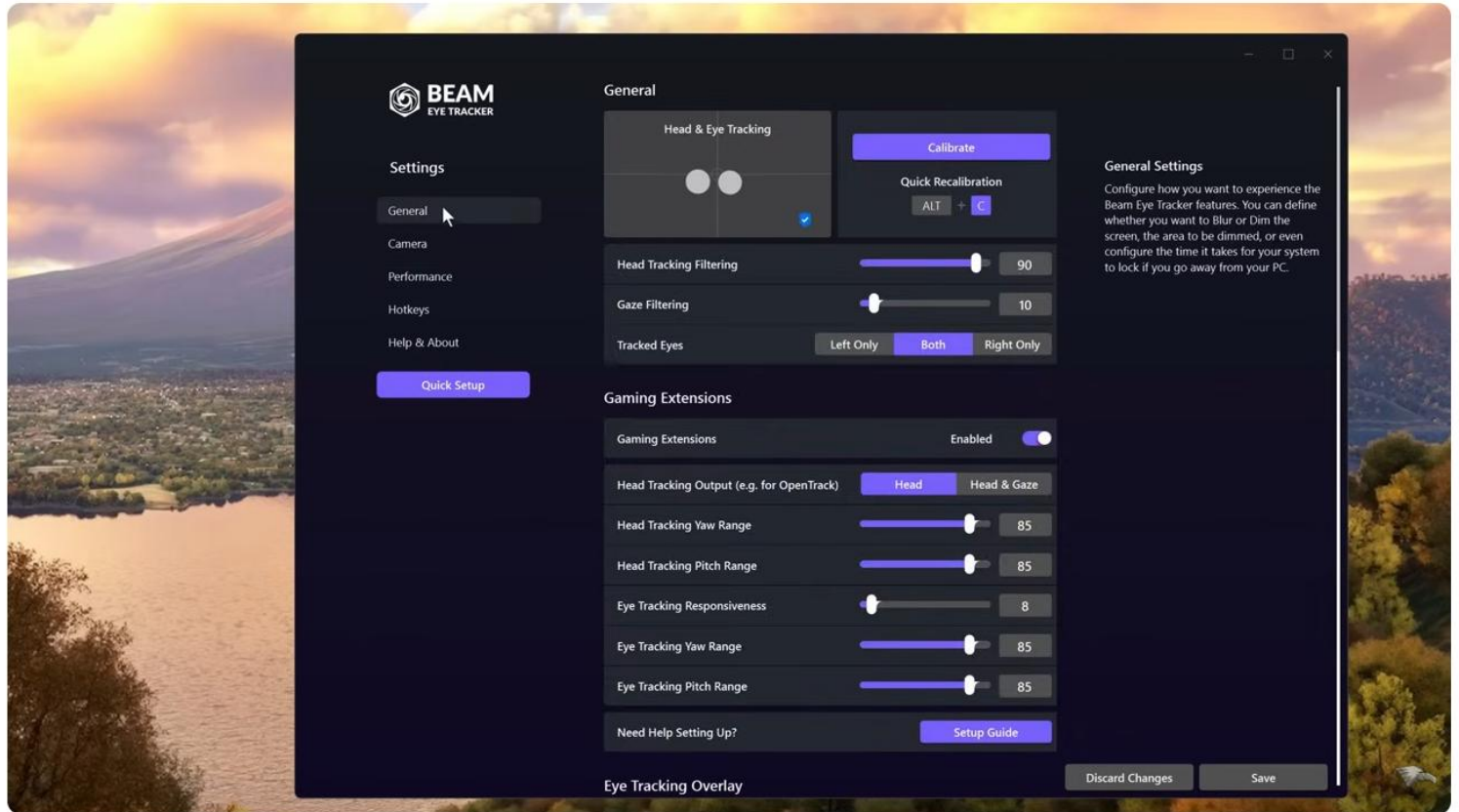




Een aardige tip.....

**Head & Eye Tracking**  
**Best BUDGET Solution**  
**US\$30!**

The image is a video thumbnail. At the top, the text 'Head & Eye Tracking' is written in large, bold, orange letters with a black outline. Below it, 'Best BUDGET Solution' is written in yellow, italicized, bold letters with a black outline, and 'US\$30!' is written in the same style below that. The background of the video shows a man with glasses and a blue t-shirt in the bottom left corner, with a circular logo of an eagle's head next to him. The main background is a cockpit view from a flight simulator, showing a central display screen and a camera mounted on the windshield. In the bottom right corner of the video frame, there is a logo consisting of a white square with a green spiral pattern, and the text '26:23' next to it.



### Head & Eye Tracking | Premium Features, BUDGET Price!



SimHanger Flight Simulation  
68,1K abonnees

Geabonneerd

287



Delen

Downloaden

Bedankt



5,7K weergaven 2 dagen geleden UNITED KINGDOM

At less than US\$30.00 for both head & eye tracking Beam Eye Tracker breaks the mould and offers new technology & affordability for flight sim pilots! In this video I test it out and run through both settings and configuration options.

...meer





# Turn Your Webcam into an Eye Tracker

Say goodbye to bulky hardware trackers for gaming and experience more immersion in 200+ games. Free demo available on Steam!

**10% OFF using promo code TONY747**

Limited time offer. Support our latest ambassador @tony747official and subscribe to his Youtube channel. Discount not applicable on Steam.

**07**  
Days

**05**  
Hours

**15**  
Minutes

**50**  
Seconds

GET BEAM EYE TRACKER NOW

